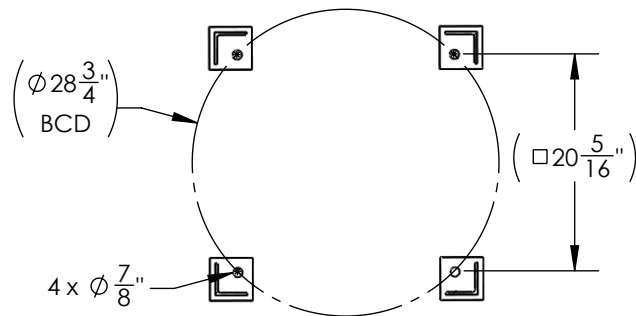
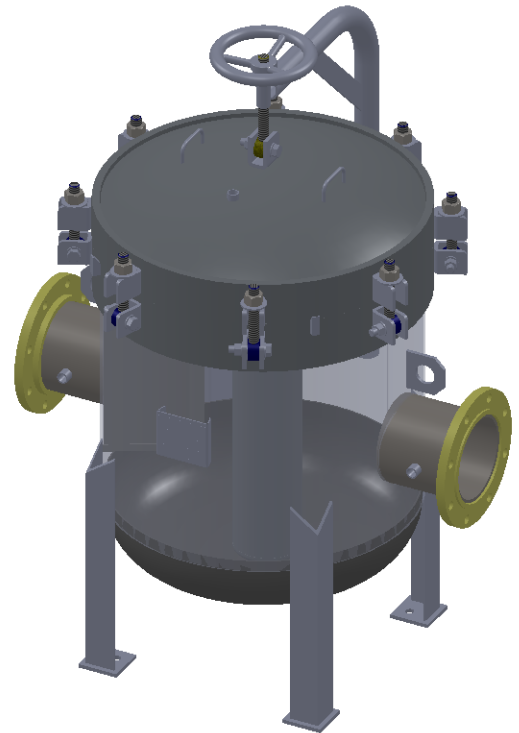
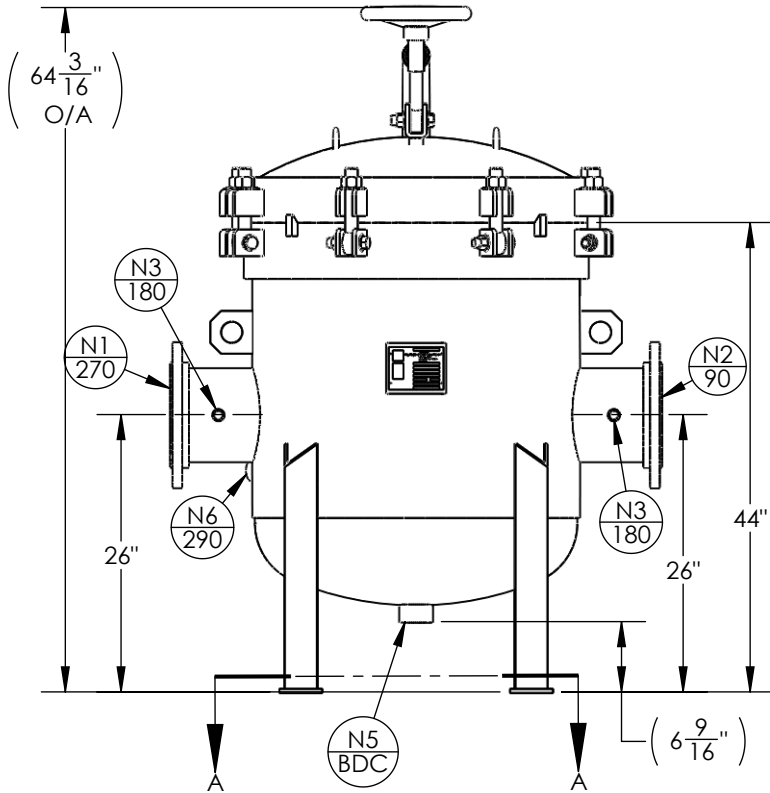


NOZZLE SCHEDULE			
MARK	QTY	SIZE / RATING	DESCRIPTION
N1	1	8" 150# RFSO	INLET
N2	1	8" 150# RFSO	OUTLET
N3	2	1/2" 3000# NPT	PRESSURE GAUGE
N4	1	1/2" 3000# NPT	VENT
N5	1	2" 3000# NPT	CLEAN DRAIN
N6	1	1/2" 3000# NPT	DIRTY DRAIN

VESSEL DESIGN CONDITIONS	
CODE: BEST COMMERCIAL PRACTICE	
M.A.W.P.:	150 PSI @ 400°F
M.A.E.P.:	FV PSI @ 400°F
M.D.M.T.:	-20° F @ 150 PSI
HYDROTEST PRESS:	195 PSI
MATERIAL:	CS

- NOTES:
1. VESSEL WILL HOUSE (QTY=10) DOUBLE (#2) LENGTH BASKET.
 2. DRY WEIGHT: 1056.34 LBS
 3. SHIPPING WEIGHT: 1300 LBS
 4. FLOODED WEIGHT: 1830 LBS
 5. VESSEL VOLUME: 12.25 C.F



SECTION A-A
SCALE 1 : 18

APPROVED WITH MARK-UPS <input type="checkbox"/>		APPROVED <input type="checkbox"/>	
 THIRD ANGLE PROJECTION		 FIL-TREK CORPORATION	
TOLERANCES-UNLESS OTHERWISE NOTED DECIMAL .X = ±.1" .XX = ±.02" .XXX = ±.005" FRACTIONAL = ±1/8" ANGULAR = ± 1° MAX. MACHINED SURFACE FINISH 125/√		55 Stafford Court Cambridge, Ontario N1T 1B3 Canada Phone: (519) 623-7448 Fax: (519) 623-8807 Email: info@fil-trek.com Website: www.fil-trek.com	
THIS DRAWING IS THE PROPERTY OF 'FIL-TREK CORPORATION' AND MUST NOT BE COPIED OR USED IN ANY WAY DETRIMENTAL TO THE CORPORATION			
EQUIPMENT:		ELP SERIES (BAG FILTER VESSEL)	
MODEL NO:		ELP30-1012-8F-B-150	
CUSTOMER:			
PARENT: NEW DESIGN	DRAWN: GB	DATE: 15/06/2017	SERIAL No. Part No. 002003-00072
CHK'D:	SCALE: NTS		REV. No. 0