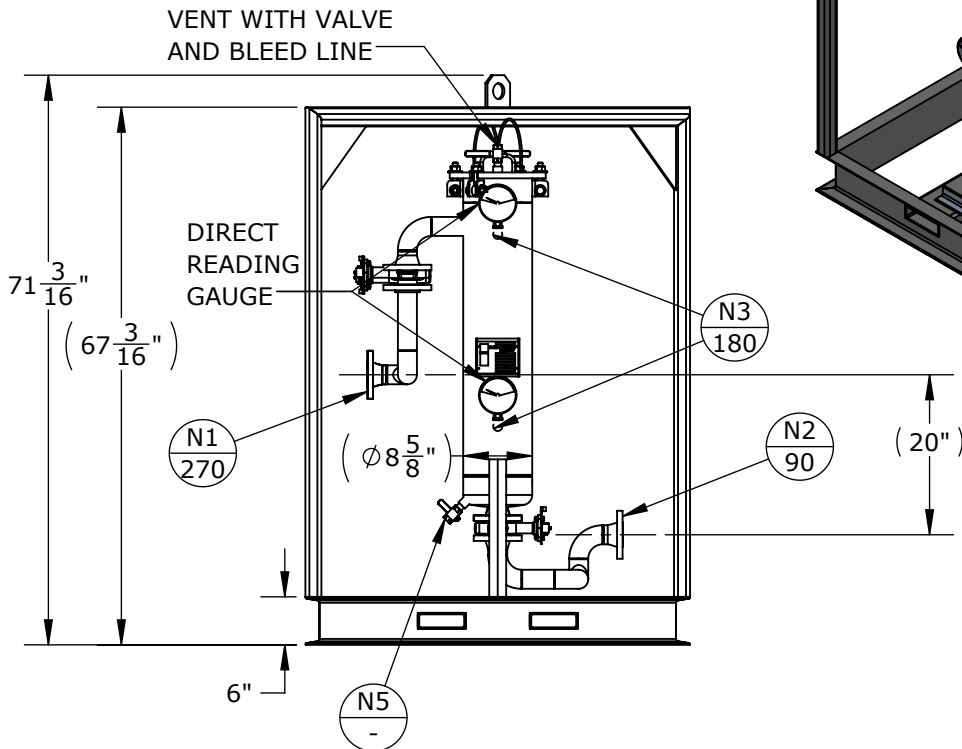
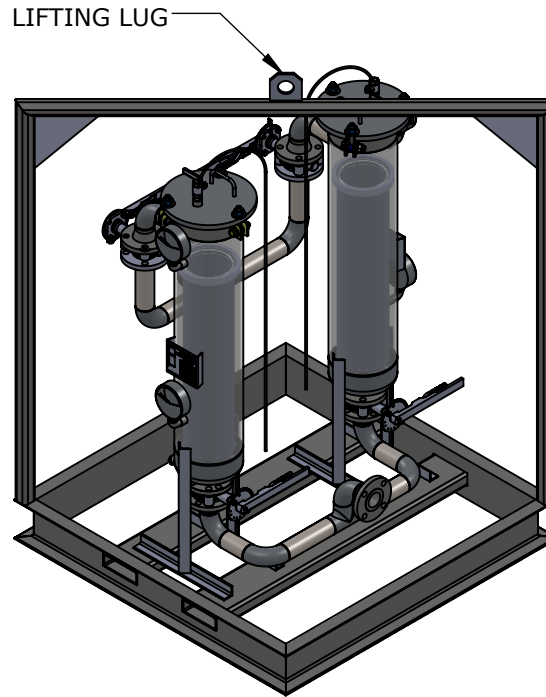


- DRY WEIGHT: 456.18 LBS
- FLOODED WEIGHT: 600 LBS
- SHIPPING WEIGHT: 500 LBS
- VESSEL VOLUME: 0.5 C.F.
- EACH VESSEL WILL HOUSE QTY-1_DOUBLE LENGTH BASKET SS304



NOZZLE SCHEDULE			
MARK	QTY	SIZE / RATING	DESCRIPTION
N1	1	2" 150# RFWN	INLET
N2	1	2" 150# RFWN	OUTLET
N3	2	1/2" 3000# NPT W/GAUGE	PRESSURE GAUGE
N4	1	1/2" 3000# NPT W/VALVE BLEED LINE	VENT
N5	1	1/2" 3000# NPT W/VALVE	CLEAN DRAIN
VESSEL DESIGN CONDITIONS			
CODE: ASME SECTION VIII DIV. 1, 2015 EDITION			
M.A.W.P.:	150 PSI @ 250°F	M.D.M.T.:	-20° F @ 150 PSI
M.A.E.P.:	15 PSI @ 250°F		
CORROSION ALLOWANCE:	NONE	HYDROTEST PRESS:	195 PSI
STAMP:	UM	SERVICE:	NON LETHAL
PWHT:	N/A	RADIOGRAPHY:	N/A
MATERIAL:	SS304	GASKET:	BUNA-N

Fil-trek Rental skid BF SERIES

- SINGLE BAG PORTABLE SKID
- GALVANIZED/ EPOXY SKID WITH FORK HOLES
- SKID WITH LIFTING LUG AND CROSS MEMBER W/ GUSSETS
- VENT WITH BALL VALVE AND BLEED LINE
- DRAINS WITH BALL VALVE
- SKID WILL HAVE QTY-4 DIRECT READING GAUGE
- QTY-4 ISOLATION BUTTERFLY VALVES
- SKID CAN BE OPERATED TANDEM OR INDIVIDUALLY

APPROVED WITH MARK-UPS APPROVED

THIRD ANGLE PROJECTION

TOLERANCES-UNLESS OTHERWISE NOTED

DECIMAL .X = ±.1"
.XX = ±.02"
.XXX = ±.005"

FRACTIONAL = ±1/8"

ANGULAR = ± 1°

MAX. MACHINED SURFACE FINISH 125 √

FIL-TREK CORPORATION

55 Stafford Court
Cambridge, Ontario
N1T 1B3
Canada

Phone: (519) 623-7448
Fax: (519) 623-8807
Email: info@fil-trek.com
Website: www.fil-trek.com

THIS DRAWING IS THE PROPERTY OF 'FIL-TREK CORPORATION' AND MUST NOT BE COPIED OR USED IN ANY WAY DETRIMENTAL TO THE CORPORATION

EQUIPMENT: RENTAL BAG VESSEL (BF SERIES)

MODEL NO: BFD2-200-S4

CUSTOMER:

PARENT: NEW	DRAWN: VD CHK'D:	DATE: 9/5/2017 SCALE: NTS	SERIAL No. Part. No. 002022-00010	REV. No. 0
-------------	---------------------	------------------------------	--------------------------------------	------------