

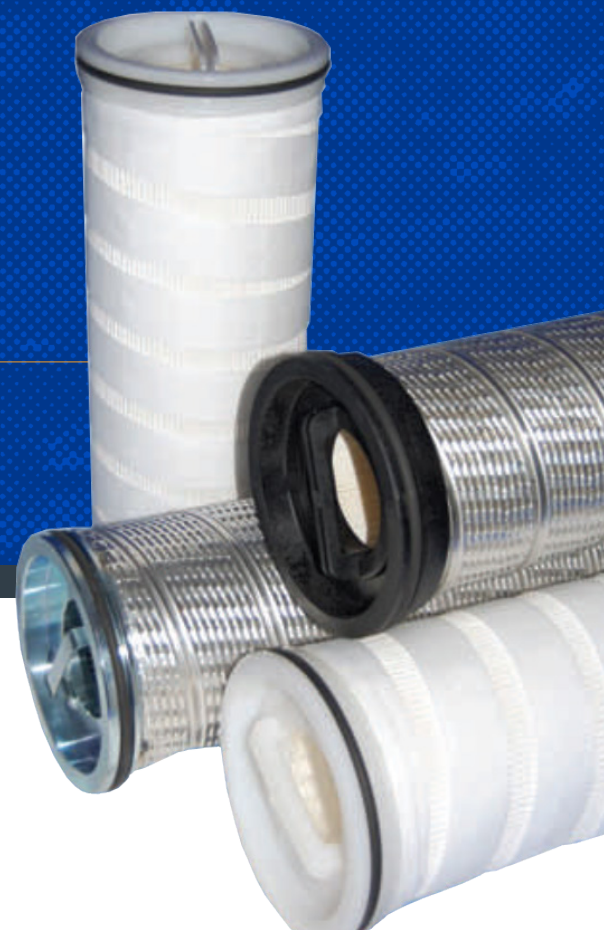


ULTRA FLOW

High Flow Pleated Filter Cartridges

- 6" OD, 3" ID
- Absolute Rated
- Inside to Outside Flow

Excellent dirt loading capacity extends life of cartridge and minimizes disposal and labor costs.



SUITABLE USES



Air & Gas



Desalination



Coolant



Water



Electronics



Coatings



Oil & Gas



Chemical



Pulp & Paper



Power



Marine



Equipment

ADDITIONAL Absolute rated, 6" diameter, pleated media cartridge filters.

FEATURES Capable of high flow rates of up to 300 GPM per 60" element.

External netting adds additional support and built in handle makes filter change out fast, easy and safe.

Thermally bonded.

COMPATIBLE HOUSINGS Fil-Trek UFV and UFH Series housings

For more information, e-mail:
info@fil-trek.com or visit Fil-Trek.com

ULTRA FLOW

High Flow Filter Cartridge

- 6" OD, 3" ID
- Absolute Rated
- Inside to Outside Flow



ELEMENT SPECIFICATIONS

REC. INITIAL PRESSURE	0.5 PSID
REC. CHANGE-OUT PRESSURE	35 PSID
DIMENSIONS	
Outside Diameter	6" (15.2 cm)
Inside Diameter	3" (7.6 cm)
Lengths	20", 40", 60", 80" (50.8 cm, 101.6 cm, 152.4 cm, 203.2 cm)
MAX. TEMPERATURE	
Polypropylene	180°F (82°C)
Polyester	240°F (115.5°C)
Cellulose	300°F (149°C)
Cotton	300°F (149°C)
Nylon	340°F (171.1°C)
Nomex	400°F (204.4°C)
Microglass	450°F (232.2°C)
MEDIA SURFACE AREA	24ft ² (2.2m ²) per 20" length

MATERIALS AVAILABLE

Media	Outer Support	Core
Polypropylene	Polypropylene	Polypropylene
Polyester	Polyester	Steel
Microglass	Nylon	
Cotton	Steel	
Cellulose		
Nylon		
Nomex		
End Caps	O-Rings	
Polypropylene	Buna-N	TEV
Microglass	EPDM	TES
Nylon	Silicone	TEE
Steel	Viton	

FDA LISTED MATERIALS All materials comply with FDA Title 21.

FLUID COMPATIBILITY

The below data is for reference only. Factors including length of exposure, concentration of fluid, temperature must also be considered. Please contact us to confirm process compatibility.

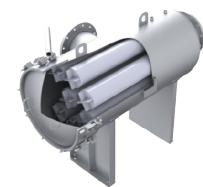
CHEMICAL	TEMPERATURE
ACETIC ACID 20%	160°F (71°C)
ALKANOLAMINES	140°F (60°C)
AMMONIUM HYDROXIDE 10%	160°F (71°C)
BLEACH 5.5%	120°F (49°C)
ETHYLENE GLYCOL	160°F (71°C)
HYDROGEN PEROXIDE	100°F (38°C)
METHYL ETHYL KETONE	70°F (21°C)
MINERAL OIL	70°F (21°C)
NITRIC ACID 20%	120°F (49°C)
POTASSIUM HYDROXIDE	140°F (60°C)
SODIUM CARBONATE	160°F (71°C)
SODIUM HYDROXIDE 70%	160°F (71°C)
SULFURIC ADIC 20%	160°F (71°C)
SULFURIC ACID 70%	160°F (71°C)
UREA	160°F (71°C)

*Based on polypropylene media w/ buna-n seals

COMPATIBLE HOUSINGS

ULTRA FLOW VERTICAL AND HORIZONTAL HOUSINGS

Available in ASME code and non-code designs, highly customizable housing, vertical and horizontal orientation. Flow rates up to 8750 GPM. Available in a variety of materials, and headlift/closure options. Duplexing and skid systems available.



[View UFV Details](#)

[View UFH Details](#)

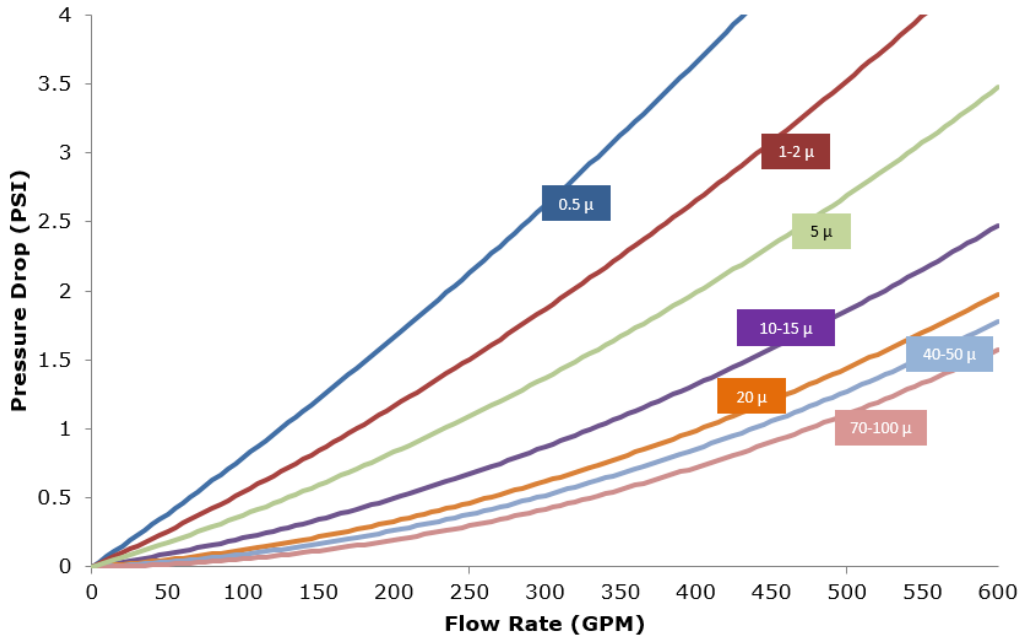
ULTRA FLOW

High Flow Filter Cartridge

- 6" OD, 3" ID
- Absolute Rated
- Inside to Outside Flow



FLOW CHART



Flow rates are representative of 60' long, polypropylene media

PRODUCT NOMENCLATURE

UF		-1	-20		-EP
MODEL	MEDIA	MICRON	LENGTH	CORE/CAPS	O-RING
UF – Ultra Flow Series	Blank - Polypropylene (std) PE - Polyester MG - Microglass CO - Cotton CE - Cellulose NY - Nylon NX - Nomex	0.5 20 1 40 2 50 5 70 10 100 15	20 40 60 80	Blank - Polypropylene (std) TN - Tinned Steel	BN - Buna-N (std) ED - EPDM SI - Silicone VI - Viton TEV - Tef. Encap Viton TES - Tef. Encap Silicone TEE - Tef. Encap EPDM

Additional customization may be available, contact Fil-Trek for part number information



55 Stafford Court, Cambridge, ON N1T 1B3 P (519) 623-7448 F (519) 623-8807

For more information, e-mail: info@fil-trek.com or visit Fil-Trek.com