



Water



Desalination



Chemicals



Electronics



Oil/Gas



Air/Gas



Inks/Paints/ Coatings



Power



Coolants



Pulp & Paper

HF SERIES

Single Round

High Flow Cartridge Filter Housings

- Multi-purpose industrial design and ASME "U" & "UM" code housings.
- Accepts single 40" & 60" High Flow cartridges.
- 150psig (10.3bar) @ 250°F(121.1°C) design pressure.
- Vessels available in carbon or stainless steel 304 or 316.
- Also available in LDX2101, C276, AL6XN, RA2205 & Monel 400.
- Swing bolt closure allows for quick element change out.
- Vessels will accept industry standard elements from:
 - 3M
- For drawings, flow charts, custom applications and filter cartridge information please visit www.fil-trek.com.

FIL-TREK CORPORATION

ONTARIO
70 Fleming Drive
Cambridge, ON
N1T 2B1

PH: (519) 623-7448
FX: (519) 623-8807

ALBERTA
7476 49th Avenue
Red Deer, AB
T4P 1M2

PH: (403) 346-6476
FX: (403) 346-5152

EMAIL: info@fil-trek.com
WEBSITE: www.fil-trek.com

HF SERIES

High Flow Filter Housing
Single Round
ASME Design

Housing Specifications

Inlet/Outlet
2" Flange -4" Flange

Dirty Drain
1" NPT

Clean Drain
1" NPT

Vent
1/2" NPT

Gauges
1/2" NPT

Certifications

U
UM
CE
NB
CRN

HF SERIES

Fil-Trek's HF series are ideal for use in industrial and commercial applications where flow rates vary between 175 and 265 GPM. Each model is available in carbon steel and stainless steel 304 and 316 and has a standard design pressure of 150psi (10 bar) @ 250°F.

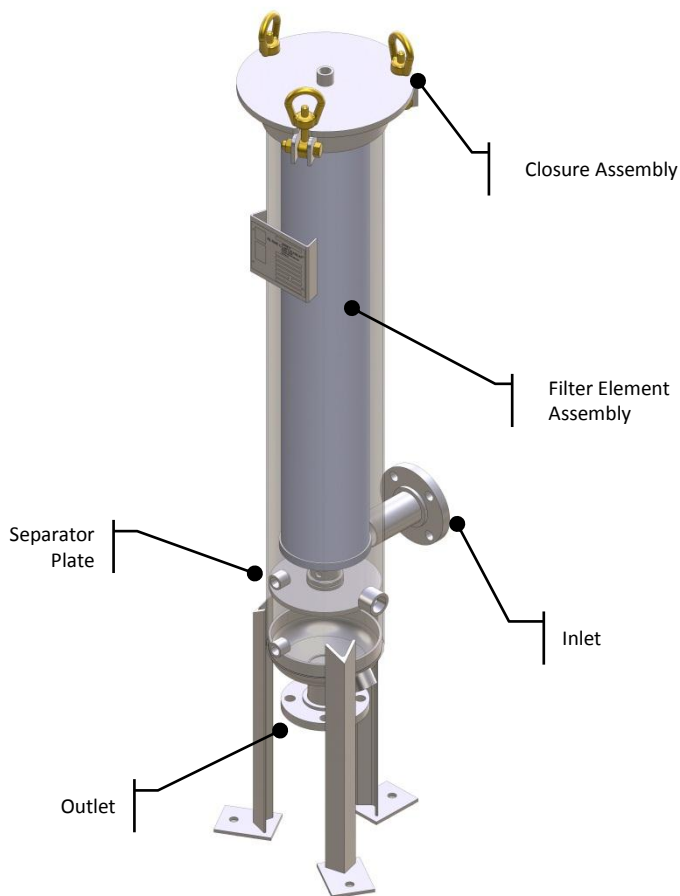
Each model is standard with the following:

- Swing-bolt closure
- 3" Flange
- Bead blast finish
- Buna-N gasket
- 2 gauge ports
- Fully welded construction throughout

MODEL FLOW RATES

MODEL	# OF FILTERS	FLOW RATE-GPM	MAX INLET/OUTLET (IN)
HFV08-01-40	1	175	4"
HFV08-01-60	1	265	4"
HFS08-01-40	1	175	4"
HFS08-01-60	1	265	4"

For maximum efficiency/product life, the flow rates are based on water at 175gpm/40". Actual Flow rate is dependent on fluid viscosity, cartridge micron rating, contaminant and type of media.



FIL-TREK CORPORATION

ONTARIO

70 Fleming Drive
Cambridge, ON
N1T 2B1

PH: (519) 623-7448
FX: (519) 623-8807

ALBERTA

7476 49th Avenue
Red Deer, AB
T4P 1M2

PH: (403) 346-6476
FX: (403) 346-5152

EMAIL: info@fil-trek.com
WEBSITE: www.fil-trek.com

MATERIAL OF CONSTRUCTION	MAX. OPERATING PRESSURE (PSI @250°F)	MAX. DESIGN TEMP
CARBON STEEL	150 psi (10.3bar)	300°F (150°C)
304 STAINLESS STEEL	150 psi (10.3bar)	300°F (150°C)
316 STAINLESS STEEL	150 psi (10.3bar)	300°F (150°C)

MODEL DIMENSIONAL DETAILS

MODEL	SHIPPING WEIGHT (LBS)	A1	A2	B1	B2	C	D1	E1	E2
HFV08-01-40-3F	180	24"	-	22"	-	9"	-	67"	-
HFV08-01-60-3F									
HFS08-01-40-3F	230	-	11"	-	15 1/2"	9"	52"	-	40"
HFS08-01-60-3F									

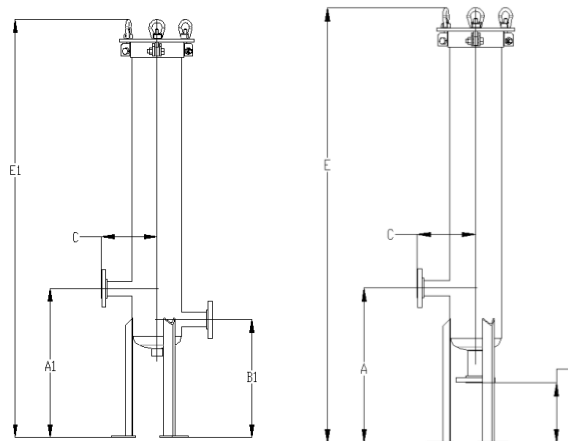
REFERENCE CHART LEGEND

A1	FLOOR TO INLET (HFV)
A2	FLOOR TO INLET (HFS)
B1	FLOOR TO OUTLET (HFV)
B2	FLOOR TO OUTLET (HFS)
C	CENTER TO FACE
D1	O/A LENGTH (HFS)
E1	O/A HEIGHT (HFV)
E2	O/A HEIGHT (HFS)

*Above dimensions are for 40" Element, Style C. For other options contact factory. **For 20 & 60in element dimensions, refer to the chart below. ***Given dimensions are approximate only, for true dimensions contact factory.

CONFIGURATION OPTIONS

VERTICAL CONFIGURATION



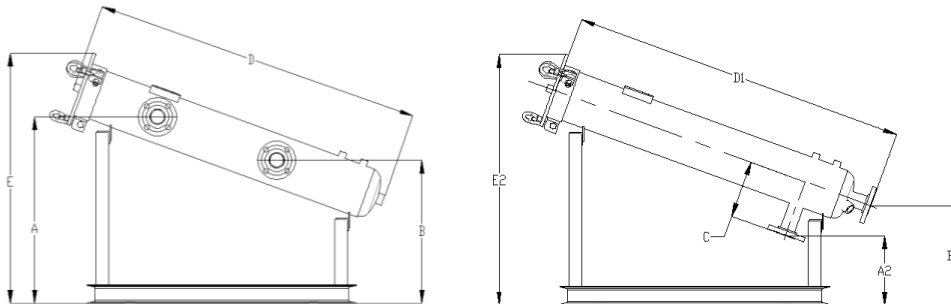
STYLE A

Side In/Side Out

STYLE C

Side In/Bottom Out

HORIZONTAL CONFIGURATION



STYLE A

Side In/Side Out

STYLE C

Side In/Bottom Out

PRODUCT NOMENCLATURE

S6	HF	V	08	001	40	4F	-	-	-	-
MATERIAL	MODEL	ORIENTATION	HOUSING DIAMETER	# OF CARTRIDGES	LENGTH	CONNECTION TYPE	HOUSING CONFIG.	FINISH	O-RING	HEAD LIFT
(-) – CARBON	HF	V – VERTICAL	SEE TABLE	SEE TABLE	40	SEE TABLE	SEE SIDE PANEL FOR OPTIONS			
S4 – SS304		S – SLOPED			60					
S6 – SS316										

HOUSING OPTIONS

Configuration Options

- (-) – Side in/side out (standard)
- B – In-Line
- D – Side in/Side out, Same Side
- E – Top entry/Back out

Finish Options

- (-) – External paint “National Blue” (Standard for carbon steel housings)
- (-) – Bead Blast (standard for stainless steel 304 and 316)
- EP1 – Electro polish Inside/Outside
- EP2 – Inside only
- EP3 – Outside only
- PP – Passivation

O-Ring Options

- (-) – Buna-N (standard)
- ED – EPDM
- VI – Viton
- SI – Silicone
- TF – Teflon

Closure Assembly Options

- (-) – K1 – Head lift (standard)
- K2 – Hinge
- K3 – Hydraulic Jack Davit Side
- K4 – Hydraulic Jack Davit Top

Accessories

- Direct Reading Gauge
- DP Gauge
- Safety Relief Valves
- Vent Valves
- Drain Valves
- Air Eliminator

Other Options

- Stainless Steel bolting
- Passivation
- Electropolished, Inside/Out
- Skid Mounting
- Duplexing

FIL-TREK CORPORATION

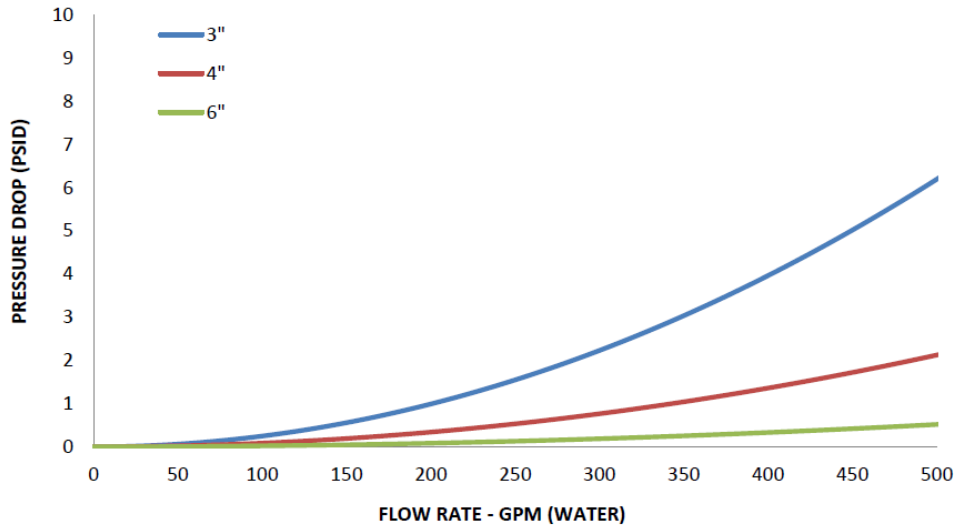
ONTARIO	ALBERTA
70 Fleming Drive	7476 49 th Avenue
Cambridge, ON	Red Deer, AB
N1T 2B1	T4P 1M2
PH: (519) 623-7448	PH: (403) 346-6476
FX: (519) 623-8807	FX: (403) 346-5152

EMAIL: info@fil-trek.com
WEBSITE: www.fil-trek.com

HF SERIES

High Flow Filter Housing
Single Round
ASME Design

FLOW CHART



FIL-TREK CORPORATION

ONTARIO

70 Fleming Drive
Cambridge, ON
N1T 2B1

PH: (519) 623-7448

FX: (519) 623-8807

ALBERTA

7476 49th Avenue
Red Deer, AB
T4P 1M2

PH: (403) 346-6476

FX: (403) 346-5152

EMAIL: info@fil-trek.com

WEBSITE: www.fil-trek.com