



# HSL SERIES

## High Pressure Single Bag Filter Housings

- High pressure single bag filter housing
- ASME "U" stamp
- Sour service design available

Our ASME "U" stamped SL Series bag filter built with upgraded design features better suited for high pressure and sour service applications.



### SUITABLE USES



Air &amp; Gas



Desalination



Coolant



Water



Electronics



Coatings



Oil &amp; Gas



Chemical



Pulp &amp; Paper



Power



Marine



Equipment

### MEDIA

Accepts 1 double length (P2) bag filter

### CONFIGURATION

Side in/bottom out\*

\*Other configurations available.

### STANDARD

**Carbon Steel****SS304/SS316**

### DESIGN PRESSURE

ANSI 300/740 PSI

ANSI 300/715 PSI

ANSI 600/1440 PSI

ANSI 600/1435 PSI

### STANDARD

### OPERATING TEMP

100°F (38°C)

### AVAILABLE

### MATERIALS

Carbon or Stainless Steel 304 or 316\*

\*Other materials available

Custom sizes, configurations, materials of construction and other options may be available. Please contact Fil-Trek

For drawings, flow charts, custom applications and filter cartridge information please visit [www.fil-trek.com](http://www.fil-trek.com).

# HSL SERIES

## 740/1440 PSI Single Bag Filter Housings

- High pressure single bag filter housings
- ASME "U" stamp
- Sour service design available



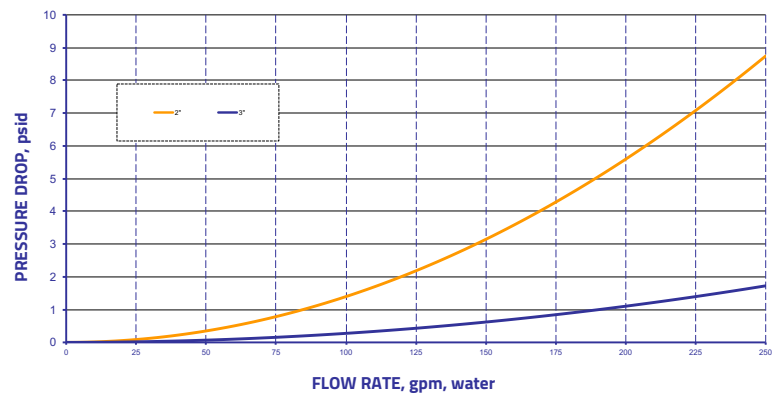
## HOUSING SPECIFICATIONS

<b>Inlet/Outlet</b>	2" - 4"
<b>Inlet/Outlet Connection Types</b>	300# RFWN Flange 600# RFWN Flange <i>*Higher pressure units available upon request</i>
<b>Clean/Dirty Drain</b>	½" 3000# NPT
<b>Vent</b>	½" 3000# NPT
<b>Gauges</b>	½" 3000# NPT
<b>Material of Construction</b>	Carbon steel SS304 SS316 <i>*C276, AL6XN, 2205, 2207 &amp; Monel 400 also available.</i>
<b>Basket</b>	⅛" on ⅜" perforated plate <i>*Other basket options available</i>
<b>Certifications</b>	U, UM, CE, NB, CRN

## MODEL FLOW RATES

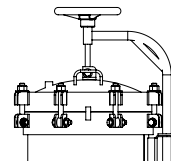
MODEL	BAG SIZE	FLOW RATE (GPM)
HSL112-2F	2	110
HSL112-3F	2	240

Flow rates are based on water at 2psid through empty housing with basket. Actual flow rate is dependant on fluid viscosity, micron rating, and media type. For actual flow rates based on your process, please contact Fil-Trek Corporation.

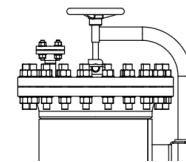


## CLOSURE OPTIONS

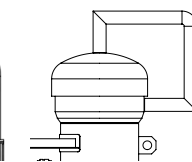
**Swing Bolt**  
H1



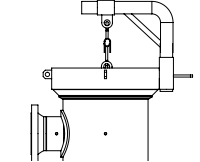
**ANSI Closure**  
H6



**QOC - Threaded**  
H10



**QOC - Yoke**  
H9



## PRODUCT NOMENCLATURE

S4	HSL	1	12	3F	740	-
<b>MATERIAL</b>	<b>MODEL</b>	<b># OF BASKETS</b>	<b>BASKET LENGTH</b>	<b>CONNECTION TYPE</b>	<b>DESIGN PRESSURE</b>	<b>OPTIONS</b>
(-) – Carbon S4 – SS304** S6 – SS316**	HSL – ASME Code* EHSL – Non-Code	1	12 – Size 2	2F – 2" Flange 3F – 3" Flange 4F – 4" Flange	<b>Carbon Steel</b> 740 – ANSI 300/740 PSI 1440 – ANSI 600/1440 PSI  <b>SS304/SS316</b> 715 – ANSI 300/715 PSI 1435 – ANSI 600/1435 PSI	See "Housing Options" for options

\*HSL series is an ASME code stamped housing. This vessel is also available in an industrial non-code design. For non-code, add the prefix "E" to the HSL in the part number



55 Stafford Court, Cambridge, ON N1T 1B3 P (519) 623-7448 F (519) 623-8807

For more information, e-mail: [info@fil-trek.com](mailto:info@fil-trek.com) or visit [Fil-Trek.com](http://Fil-Trek.com)

# HSL SERIES

## 740/1440 PSI Single Bag Filter Housings

- High pressure single bag filter housings
- ASME "U" stamp
- Sour service design available

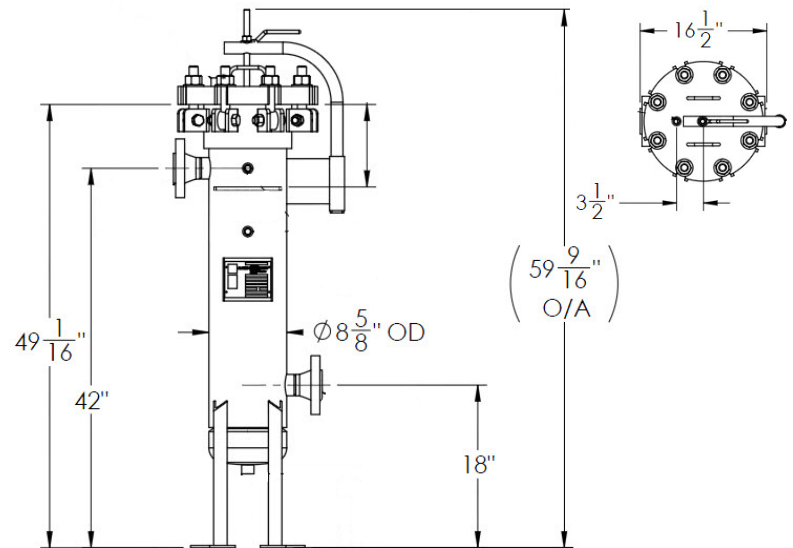


## HOUSING OPTIONS

\*Indicates standard configuration

<b>Configuration Options</b>	<b>(-) – Side in/Bottom out*</b> A – Side in/side out D – Side in/out Same Side
<b>Basket Options</b>	<b>(-) – 1/4" on 3/4" perforated basket*</b> MB ____ – Mesh lined basket <i>(insert mesh size in blank space)</i>
<b>Finish Options</b>	<b>(-) – Paint "National Blue" (std for CS) *</b> <b>(-) – Bead Blast (std for SS304/SS316) *</b> EP1 – Electro polish Inside/Outside EP2 – Inside only EP3 – Outside only PP – Passivation
<b>O-Ring Options</b>	<b>(-) – Buna-N*</b> ED – EPDM VI – Viton SI – Silicone TEV – Teflon encapsulated Viton
<b>Sour Service</b>	<b>(-) – None*</b> SR – Sour service, see below changes to design
<b>Closure Options</b>	<b>(-) – Swing Bolt*</b> H6 – ANSI Closure H10 – Quick Open Closure – Threaded H9 – Quick Open Closure – Yoke
<b>Accessories</b>	Direct Reading Gauge DP Gauge Safety Relief Valves Vent Valves Drain Valves Air Eliminator Omega Springs Balloon/Liquid Displacer Bag Magnets

## MODEL DIMENSIONAL DETAILS



Dimensions above are based on standard configuration 'C', side in-bottom out. Contact factory for weights and dimensions for all other model configurations

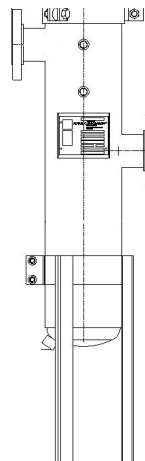
## FOR SOUR SERVICE

- Corrosion allowance, 1/8" for CS, 1/16 for SS
- PWHT for carbon steel
- All butt welds
- Radiograph/RT-1

## CONFIGURATION OPTIONS

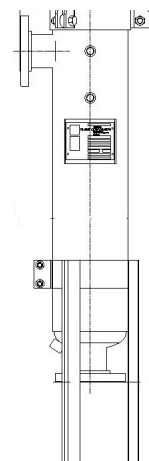
### Style A

Side in/Side out



### Style C

Side in/Bottom Out  
HSL Standard Design



### Style D

Side in/Side Out  
Same side

