



FIBERLOC P SERIES

Reverse Flow Depth Microglass Coalescers

- 0.3 Micron, Absolute Rated
- Microglass w/ Integral Cellulose Pre-Filter
- Inside to Outside Flow Path

Ideal for the removal of sub-micron particulate and aerosolized liquid from air and gas streams. The integral pre-filter extends service life by catching contaminants prior to reaching the coalescing media.



SUITABLE USES



Air & Gas



Oil & Gas

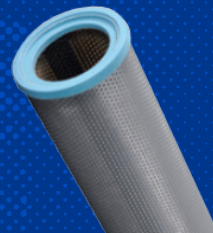
MEDIA	Microglass w/ cellulose internal pre-filter
EFFICIENCY	98.5%
SIZING	Available in 336 and 540 sizes <i>Additional sizes may be available, please contact Fil-Trek.</i>
COMPATIBLE HOUSINGS	77V
ADDITIONAL FEATURES	Comparable to Peco FibrCeptor FFP microglass coalescers. Internal pre-filter removes contaminants before reaching the coalescing media. This can act as a first stage filtration effort where a separate pre-filter is not an option.

For more information, e-mail:
info@fil-trek.com or visit Fil-Trek.com

FIBERLOC P SERIES

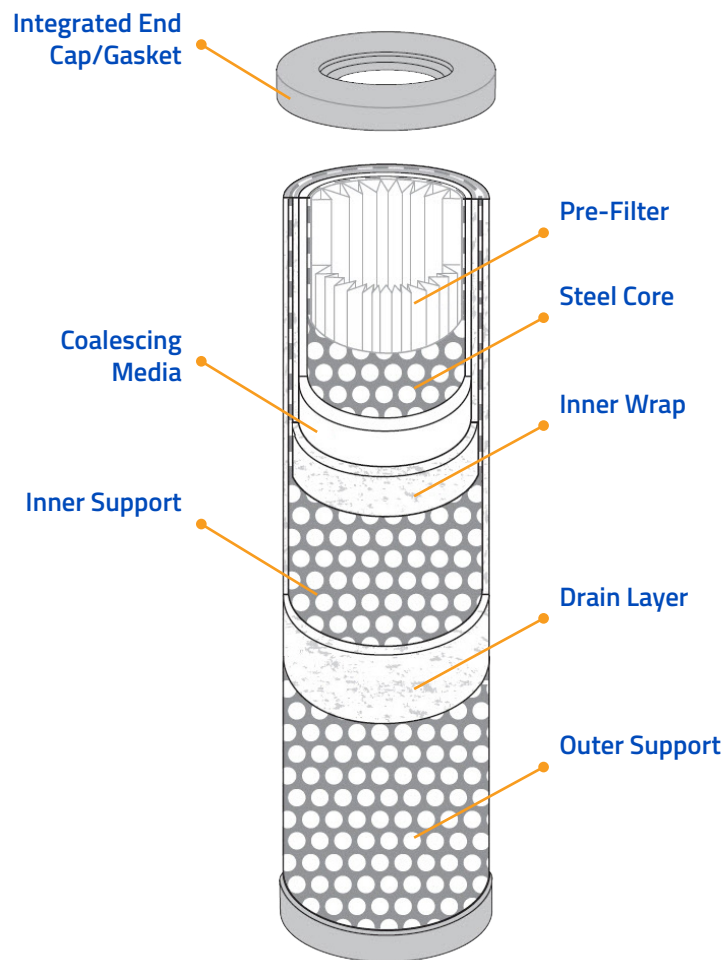
Reverse Flow Depth Microglass Coalescers

- 0.3 Micron, Absolute Rated
- Microglass w/ Integral Pre-Filter
- Inside to Outside Flow Path



ELEMENT SPECIFICATIONS

MAX. DIFFERENTIAL PRESSURE	100 PSID
REC. CHANGE OUT PRESSURE	8 PSID
MAX. OPERATING TEMPERATURE	350°F (176.7°C)
MICRON RATINGS	0.3
MATERIALS AVAILABLE	
Coalescing Media	Microglass
Pre-filter Media	Cellulose
Drain Layer	Fiberglass
Inner and Outer Support Media, Core	Steel
End Caps	Molded Silicone <i>Not recommended in H2S service > 5%</i> Steel
Gaskets*	Buna-N EPDM Viton <i>*For use with steel end caps</i>
FILTER CONFIGURATION	Double Open End



COMPATIBLE HOUSINGS

77V GAS COALESCER HOUSINGS

Ideal for the removal of solid contaminants and aerosol mists from gas streams 0.3 micron and larger. Built to ASME code, 6" to 36" diameter and pressures up to 1480 PSI.

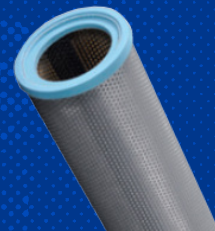
[Click to view 77V Series](#)



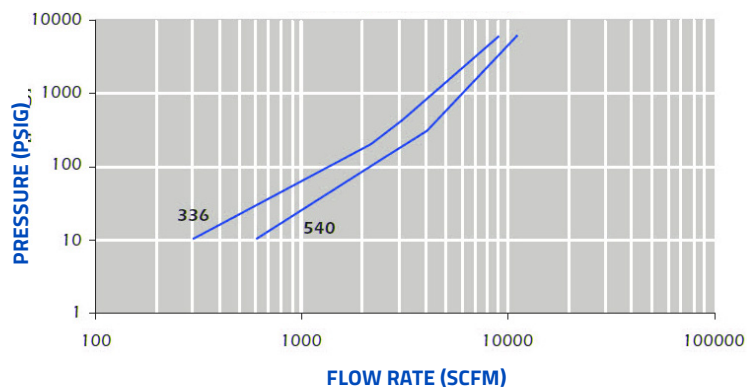
FIBERLOC P SERIES

Reverse Flow Depth Microglass Coalescers

- 0.3 Micron, Absolute Rated
- Microglass w/ Integral Pre-Filter
- Inside to Outside Flow Path



FLOW CHART



0.65 S.G. and 60 deg F. Based on 2 PSI initial pressure drop.

DIMENSIONAL DETAILS

MODEL	OD	ID	LENGTH
FLP-336	4.5"	2.6"	36"
FLP-540	6.0"	4.1"	40"

Additional sizes may be available, please contact Fil-Trek.

PRODUCT NOMENCLATURE

FLP	336	BN	
MODEL	SIZE	GASKET	OPTIONS
FiberLoc P Series	336 540	Blank - Silicone end caps BN - Buna-N EP - EPDM VI - Viton <i>*Buna and Viton gaskets use steel end caps</i>	SS - SS hardware