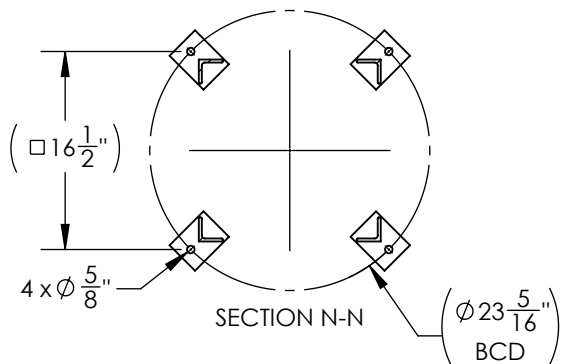
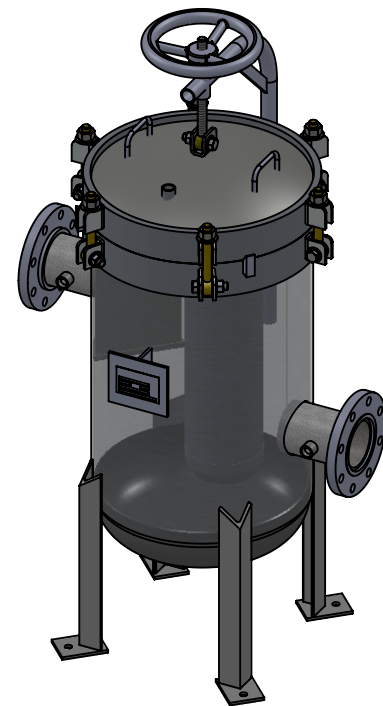
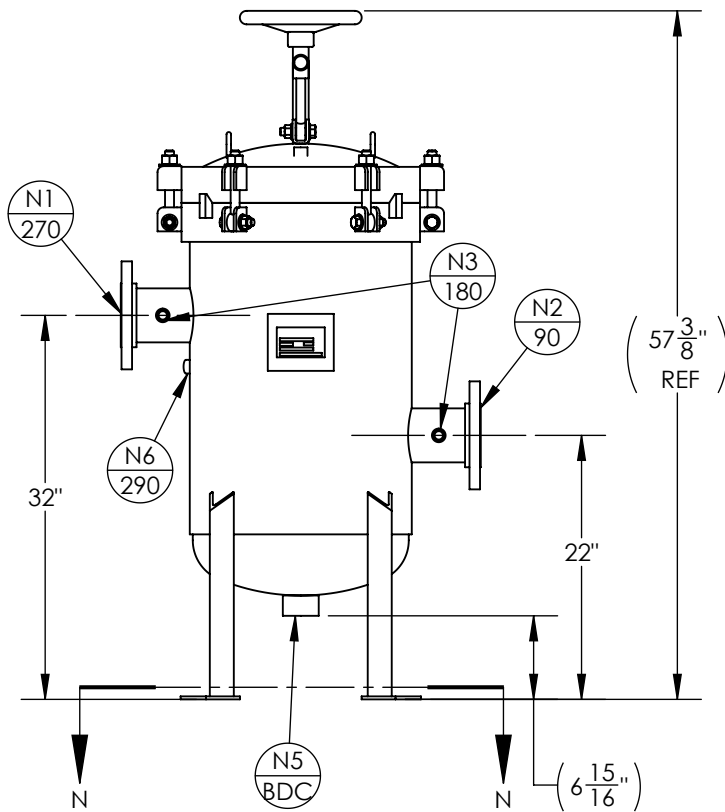


NOZZLE SCHEDULE			
MARK	QTY	SIZE / RATING	DESCRIPTION
N1	1	4" 150# RFSO	INLET
N2	1	4" 150# RFSO	OUTLET
N3	2	1/2" 3000# NPT	PRESSURE GAUGE
N4	1	1/2" 3000# NPT	VENT
N5	1	2" 3000# NPT	CLEAN DRAIN
N6	1	1/2" 3000# NPT	DIRTY DRAIN
VESSEL DESIGN CONDITIONS			
CODE: BEST COMMERCIAL PRACTICE			
M.A.W.P.:	150 PSI @ 400°F	GASKET:	EPDM
M.A.W.P.:	FV PSI @ 400°F		
M.D.M.T.:	-20° F @ 150 PSI		
HYDROTEST PRESS:	195 PSI		
MATERIAL:	CS		

NOTES:

1. VESSEL WILL HOUSE (QTY=3) SIZE 2 DOUBLE LENGTH BASKET.
2. DRY WEIGHT: 355.67 LBS
3. SHIPPING WEIGHT: 450 LBS
4. FLOODED WEIGHT: 690 LBS
5. VESSEL VOLUME: 5.22 C.F.



APPROVED WITH MARK-UPS <input type="checkbox"/>		APPROVED <input type="checkbox"/>	
 THIRD ANGLE PROJECTION		 FIL-TREK CORPORATION	
TOLERANCES-UNLESS OTHERWISE NOTED DECIMAL .X = ±.1" .XX = ±.02" .XXX = ±.005" FRACTIONAL = ±1/8" ANGULAR = ± 1° MAX. MACHINED SURFACE FINISH 125√		55 Stafford Court Cambridge, Ontario N1T 1B3 Canada Phone: (519) 623-7448 Fax: (519) 623-8807 Email: info@fil-trek.com Website: www.fil-trek.com	
THIS DRAWING IS THE PROPERTY OF 'FIL-TREK CORPORATION' AND MUST NOT BE COPIED OR USED IN ANY WAY DETRIMENTAL TO THE CORPORATION			
EQUIPMENT:		ELP SERIES (BAG FILTER VESSEL)	
MODEL NO:		ELP18-312-4F-A-150	
CUSTOMER:		LAYNE	
PARENT: NEW DESIGN	DRAWN: JN	DATE: 15/05/2019	SERIAL No. V10818
CHK'D: UP	SCALE: NTS	Part No. 002003-00230	REV. No. 0