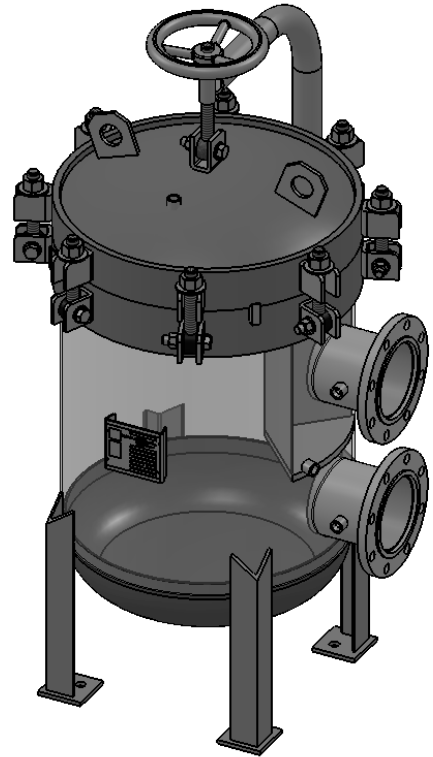
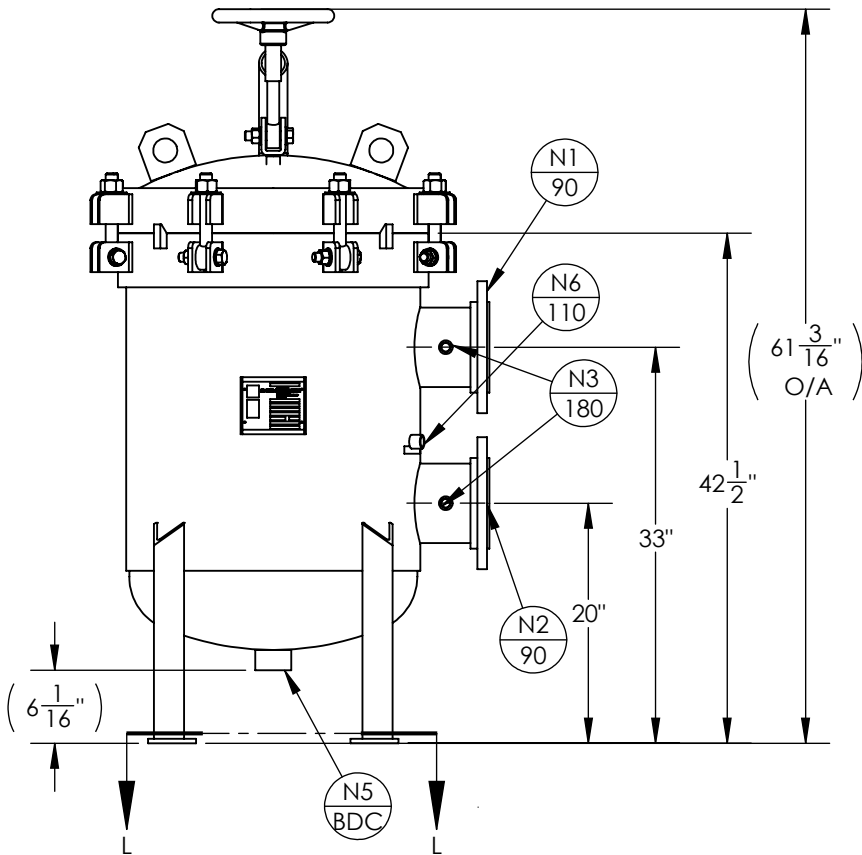


| NOZZLE SCHEDULE | | | |
|-----------------|-----|----------------|----------------|
| MARK | QTY | SIZE / RATING | DESCRIPTION |
| N1 | 1 | 6" 150# RFSO | INLET |
| N2 | 1 | 6" 150# RFSO | OUTLET |
| N3 | 2 | 1/2" 3000# NPT | PRESSURE GAUGE |
| N4 | 1 | 1/2" 3000# NPT | VENT |
| N5 | 1 | 2" 3000# NPT | CLEAN DRAIN |
| N6 | 1 | 1/2" 3000# NPT | DIRTY DRAIN |

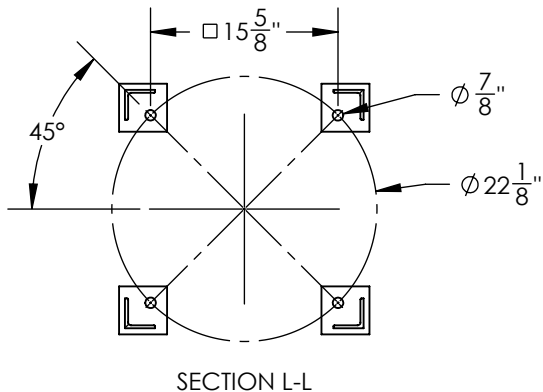
| VESSEL DESIGN CONDITIONS | |
|--------------------------|--|
| CODE: | ASME SECTION VIII DIV. 1, 2015 EDITION |
| M.A.W.P.: | 150 PSI @ 250°F |
| M.D.M.T.: | -20° F @ 150 PSI |
| M.A.W.P.: | FV PSI @ 250°F |
| CORROSION ALLOWANCE: | NONE |
| HYDROTEST PRESS: | 195 PSI |
| STAMP: | "U" / CRN U6747.2C |
| SERVICE: | NON LETHAL |
| PWHT: | N/A |
| RADIOGRAPHY: | N/A |
| MATERIAL: | SS 304 |
| GASKET: | BUNA-N |

NOTES:

- VESSEL WILL HOUSE (QTY=7) DOUBLE LENGTH BASKET.
- DRY WEIGHT: 524.03 LBS
- SHIPPING WEIGHT: 600 LBS
- FLOODED WEIGHT: 1000 LBS
- VESSEL VOLUME: 7.1 C.F.



VESSEL A



| | | |
|---|---|-------------------------------|
| <p>THIRD ANGLE PROJECTION</p> <p>TOLERANCES-UNLESS OTHERWISE NOTED</p> <p>DECIMAL .X = ±.1" .XX = ±.02" .XXX = ±.005"</p> <p>FRACTIONAL = ±1/8"</p> <p>ANGULAR = ± 1°</p> <p>MAX. MACHINED SURFACE FINISH 125/√</p> | <p>FIL-TREK CORPORATION</p> <p>55 Stafford Court Cambridge, Ontario N1T 1B3 Canada</p> <p>Phone: (519) 623-7448 Fax: (519) 623-8807 Email: info@fil-trek.com Website: www.fil-trek.com</p> | |
| | <p>THIS DRAWING IS THE PROPERTY OF 'FIL-TREK CORPORATION' AND MUST NOT BE COPIED OR USED IN ANY WAY DETRIMENTAL TO THE CORPORATION</p> | |
| EQUIPMENT: | | BAG FILTER VESSEL (LP SERIES) |
| MODEL NO: | | S4LPD24-712-6F |
| CUSTOMER: | | FIL-TREK STOCK |
| PARENT: | DRAWN: JJJ | DATE: 24/05/2017 |
| CHK'D: CW | SCALE: NTS | SERIAL No. V9285 |
| | | Part No. 002004-00006 |
| | | REV. No. 3 |