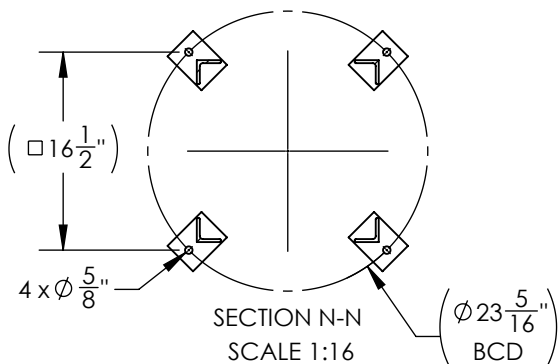
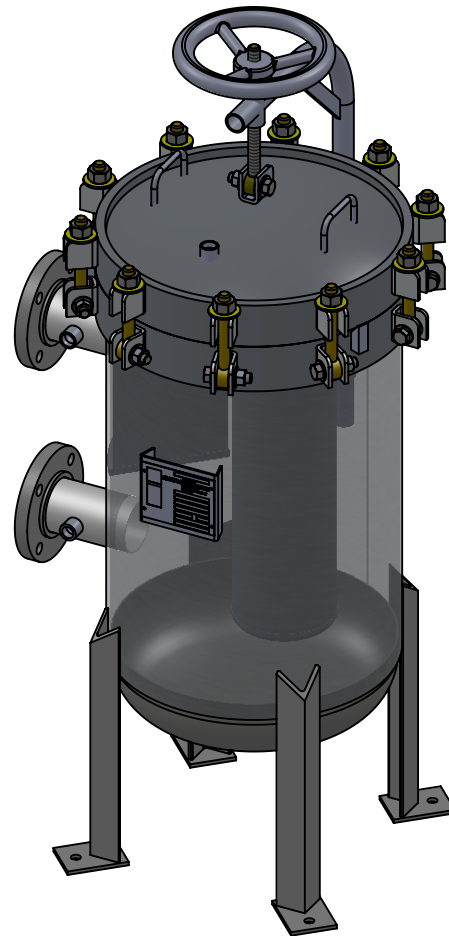
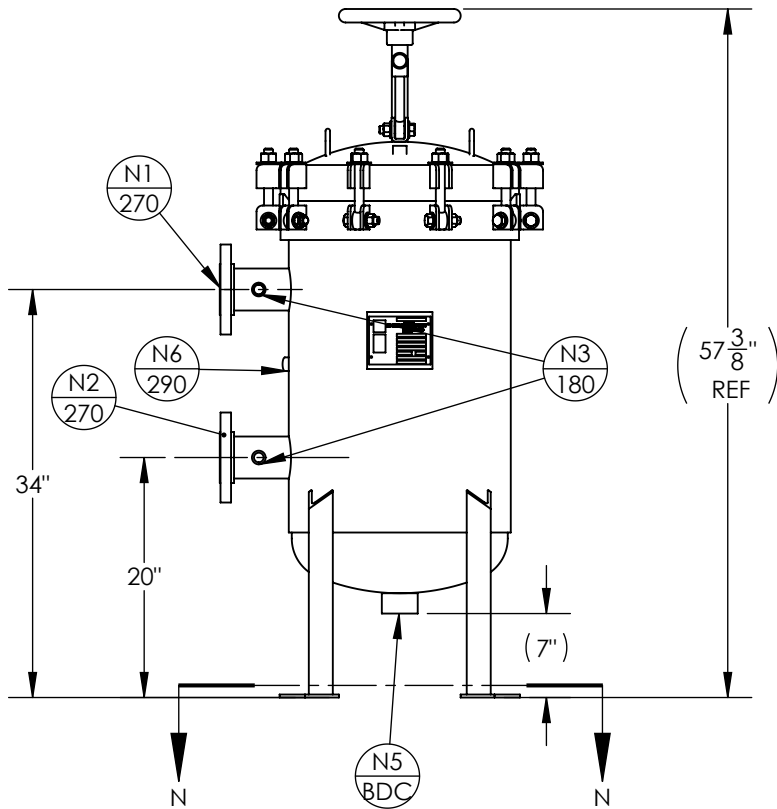


NOZZLE SCHEDULE			
MARK	QTY	SIZE / RATING	DESCRIPTION
N1	1	3" 150# RFSO	INLET
N2	1	3" 150# RFSO	OUTLET
N3	2	1/2" 3000# NPT	PRESSURE GAUGE
N4	1	1/2" 3000# NPT	VENT
N5	1	2" 3000# NPT	CLEAN DRAIN
N6	1	1/2" 3000# NPT	DIRTY DRAIN
VESSEL DESIGN CONDITIONS			
CODE: ASME SECTION VIII DIV. 1, 2017 EDITION			
M.A.W.P.: 150 PSI @ 400°F		M.D.M.T.: -50° F @ 150 PSI	
M.A.W.P.: FV PSI @ 400°F			
CORROSION ALLOWANCE: NONE		HYDROTEST PRESS: 210 PSI	
STAMP: U CRN Y7119.21		SERVICE: LIQUID NON LETHAL	
PWHT: N/A		RADIOGRAPHY: N/A	
MATERIAL: SS 316		GASKET: BUNA-N	

- NOTES:
- VESSEL WILL HOUSE (QTY=3) SIZE 2 DOUBLE LENGTH BASKET.
 - DRY WEIGHT: 342.98 LBS
 - SHIPPING WEIGHT: 500 LBS
 - FLOODED WEIGHT: 690 LBS
 - VESSEL VOLUME: 5.90 C.F.



APPROVED WITH MARK-UPS <input type="checkbox"/>		APPROVED <input type="checkbox"/>	
 THIRD ANGLE PROJECTION	 FIL-TREK CORPORATION		
	55 Stafford Court Cambridge, Ontario N1T 1B3 Canada		
TOLERANCES-UNLESS OTHERWISE NOTED DECIMAL .X = ±.1" .XX = ±.02" .XXX = ±.005" FRACTIONAL = ±1/8" ANGULAR = ± 1° MAX. MACHINED SURFACE FINISH 125/√		Phone: (519) 623-7448 Fax: (519) 623-8807 Email: info@fil-trek.com Website: www.fil-trek.com	
THIS DRAWING IS THE PROPERTY OF 'FIL-TREK CORPORATION' AND MUST NOT BE COPIED OR USED IN ANY WAY DETRIMENTAL TO THE CORPORATION			
EQUIPMENT:		LP SERIES (BAG FILTER VESSEL)	
MODEL NO:		S6LP18-312-3F-DB-150	
CUSTOMER:			
PARENT: NEW DESIGN	DRAWN: JN	DATE: 29/06/2017	SERIAL No. Part No. 002004-00160 Registered As 002004-00159
CHK'D: JJJ	SCALE: NTS		REV. No. 0