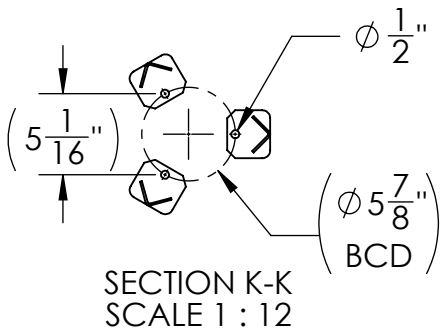
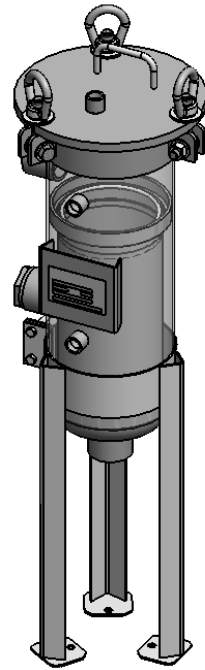
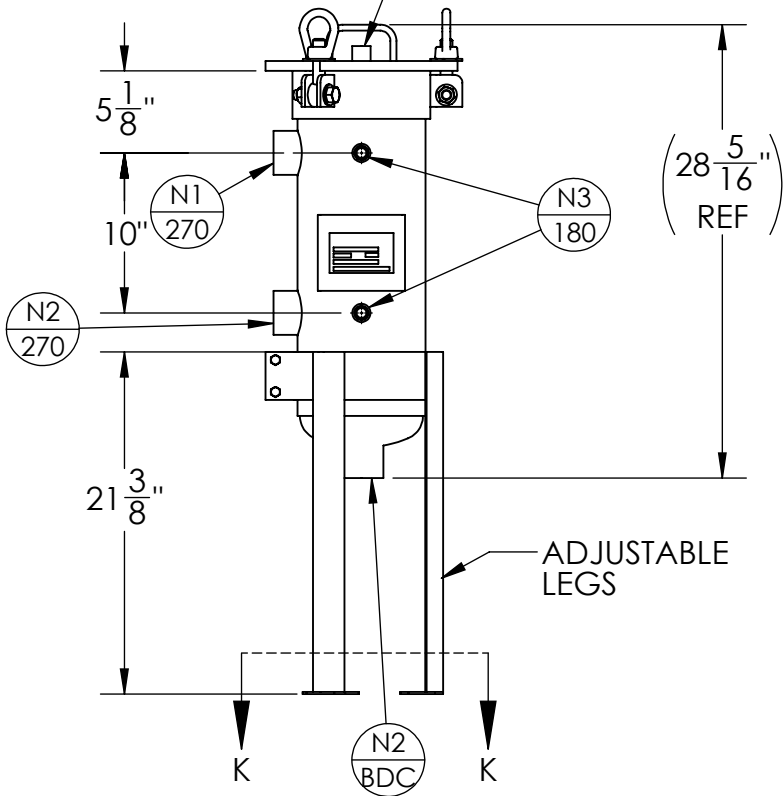


NOZZLE SCHEDULE			
MARK	QTY	SIZE / RATING	DESCRIPTION
N1	1	2" 150# RFSO	INLET
N2	1	2" 150# RFSO	OUTLET
N3	2	1/2" 3000# NPT	PRESSURE GAUGE
N4	1	1/2" 3000# NPT	VENT
N5	0	-	CLEAN DRAIN
N6	0	-	DIRTY DRAIN

VESSEL DESIGN CONDITIONS	
CODE: BEST COMMERCIAL PRACTICE	
M.A.W.P.: 150 PSI @ 400°F	GASKET: BUNA-N
M.A.W.P.: FV PSI @ 400°F	
M.D.M.T.: -20° F @ 150 PSI	
HYDROTEST PRESS: 150 PSI	
MATERIAL: CS	

- NOTES:
1. VESSEL WILL HOUSE (QTY=1) SINGLE LENGTH BASKET.
 2. DRY WEIGHT: 75 LBS
 3. FLOODED WEIGHT: 125 LBS
 4. SHIPPING WEIGHT: 127 LBS
 5. VESSEL VOLUME: 0.70 FT³



APPROVED WITH MARK-UPS APPROVED



TOLERANCES-UNLESS OTHERWISE NOTED
 DECIMAL .X = ±.1"
 .XX = ±.02"
 .XXX = ±.005"
 FRACTIONAL = ±1/8"
 ANGULAR = ± 1°
 MAX. MACHINED SURFACE FINISH 125/√



FIL-TREK CORPORATION

55 Stafford Court
 Cambridge, Ontario
 N1T 1B3
 Canada

Phone: (519) 623-7448
 Fax: (519) 623-8807
 Email: info@fil-trek.com
 Website: www.fil-trek.com

THIS DRAWING IS THE PROPERTY OF 'FIL-TREK CORPORATION' AND MUST NOT BE COPIED OR USED IN ANY WAY DETRIMENTAL TO THE CORPORATION

EQUIPMENT: ESL SERIES (BAG FILTER HOUSING)

MODEL NO: ESL111-2P-SW-CD-150

CUSTOMER:

PARENT:	DRAWN: JN	DATE: 07/09/2017	SERIAL No.	Part No. 002001-20036	REV. No. 0
	CHK'D:	SCALE: NTS			