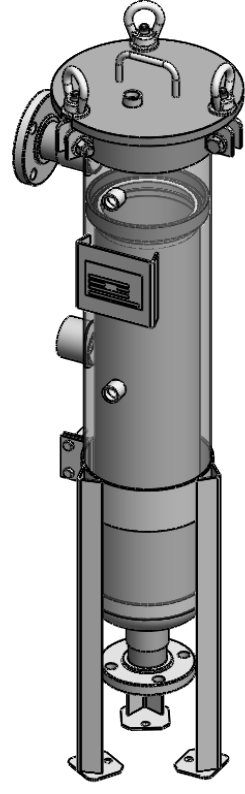


SECTION F-F  
SCALE 1 : 12

NOZZLE SCHEDULE			
MARK	QTY	SIZE / RATING	DESCRIPTION
N1	1	2" 150# RFSO	INLET
N2	1	2" 150# RFSO	OUTLET
N3	2	1/2" 3000# NPT	PRESSURE GAUGE
N4	1	1/2" 3000# NPT	VENT
N5	1	2" 150# NPT W/PLUG	CLEAN DRAIN
N6	1		DIRTY DRAIN

VESSEL DESIGN CONDITIONS	
CODE:	BEST COMMERCIAL PRACTICE
M.A.W.P.:	150 PSI @ 400°F
M.A.W.P.:	FV PSI @ 400°F
M.D.M.T.:	-50° F @ 150 PSI
HYDROTEST PRESS:	210 PSI
MATERIAL:	SS304

- NOTES:
1. VESSEL WILL HOUSE (QTY=1) DOUBLE LENGTH BASKET.
  2. DRY WEIGHT: 94.59 LBS
  3. FLOODED WEIGHT: 140 LBS
  4. SHIPPING WEIGHT: 100 LBS
  5. VESSEL VOLUME: 1.0 FT<sup>3</sup>



APPROVED WITH MARK-UPS  APPROVED

<p>THIRD ANGLE PROJECTION</p> <p>TOLERANCES-UNLESS OTHERWISE NOTED</p> <p>DECIMAL .X = ±.1" .XX = ±.02" .XXX = ±.005"</p> <p>FRACTIONAL = ±1/8"</p> <p>ANGULAR = ± 1°</p> <p>MAX. MACHINED SURFACE FINISH 125/√</p>	<p><b>FIL-TREK CORPORATION</b></p> <p>55 Stafford Court Cambridge, Ontario N1T 1B3 Canada</p> <p>Phone: (519) 623-7448 Fax: (519) 623-8807 Email: info@fil-trek.com Website: www.fil-trek.com</p>				
	<p>THIS DRAWING IS THE PROPERTY OF 'FIL-TREK CORPORATION' AND MUST NOT BE COPIED OR USED IN ANY WAY DETRIMENTAL TO THE CORPORATION</p> <p>EQUIPMENT: ESL SERIES (BAG FILTER HOUSING)</p> <p>MODEL NO: S4ESL112-2F-SW-C-150</p> <p>CUSTOMER:</p>				
PARENT:	DRAWN: JN	DATE: 04/01/2019	SERIAL No.	Part No. 002001-18524	REV. No. 0
	CHK'D:	SCALE: NTS			