

# FX-TG SERIES

## Gas Particulate Filter

- Tool-free and quick change-outs
- Higher dirt-holding capacity for longer run times
- Lowest cost of ownership in the industry

FX-TG elements are pleated-media cartridges designed for particulate removal in gas streams with industry compatible quick change out form factor. Their large surface area pleats provide low initial pressure drop and extended service life, while safeguarding downstream coalescers and equipment.



### MEDIA

Polyester, Polypropylene



Air & Gas

### FLOW DIRECTION

Outside-to-Inside

### AVAILABILITY

4.5" outer diameter  
28", 43", 79" lengths

### COMPATIBLE HOUSING

Fil-Trek FX70V Series  
Parker Peco Series 70 TITAN PuraSep  
*Form, fit, and function compatible with Parker Peco EZ-PSFG TruGard, Jonell GasPleat Quick-Change Series (JQC)*

### HOW IT WORKS

- Gas flows outside-to-inside across closely spaced pleats. A filter cake forms on the upstream side, enhancing fine particle capture and ensuring stable efficiency.
- FX version features a keyed interface between the housing riser and inner cartridge top cap to keep the element concentric, prevent sag under liquid load, and maintain a tight gasket-to-cup seal to eliminate bypass.

### TYPICAL APPLICATIONS

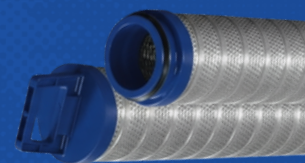
- Dry gas transmission
- Dry gas processing
- Dry gas storage
- Amine gas
- Compressor protection
- Contactor protection
- Fuel gas
- Instrument air
- Particulate & solid removal
- Methylene chloride (dichloromethane) service

For more information, please contact  
[info@fil-trek.com](mailto:info@fil-trek.com) or visit [Fil-Trek.com](http://Fil-Trek.com)

# FX-TG SERIES

## Gas Particulate Filter

- Tool-free and quick change-outs
- Extended run time
- Lowest ownership cost



### TECHNICAL SPECIFICATIONS

OUTSIDE DIAMETER	4.5"
INNER DIAMETER	3.0"
MICRON RATING	0.5, 1, 5, 10, 20, 50
BOTTOM CAP	FX bottom cap
TOP CAP	FX top cap
INNER CORE	Stainless Core
OUTER CORE	Stainless Core
SEALS	Buna, EPDM, Viton, PTFE Seals
MAX. TEMP.	Polypropylene 180 °F (82 °C) Polyester 240 °F (116 °C)
MAX. DIFF. PRESSURE	50 psid (3.45 bar)
REC. CHANGE-OUT	15 psid (1.0 bar)

### NOMINAL DIMENSIONS

SIZE	O.D.	I.D.	LENGTH
328	4.5" (114 mm)	3.0" (77 mm)	28" (712 mm)
343	4.5" (114 mm)	3.0" (77 mm)	43" (1093 mm)
379	4.5" (114 mm)	3.0" (77 mm)	24" (2007 mm)

### BOTTOM & TOP CAPS



FX TOP CAP



FX BOTTOM CAP

### PRODUCT NOMENCLATURE

FX-TG	328	PP	0.1	B
SERIES	SIZE	MEDIA	MICRON	SEAL
FX-TG - FX-TG Series	328	PP - Polypropylene	0.5 10	B - BUNA
	343	PE - Polyester	1 20	E - EPDM
	379		5 50	V - VITON
				TF - PTFE

**Nomenclature Examples**  
FX-TG-328-PE-0.3-V