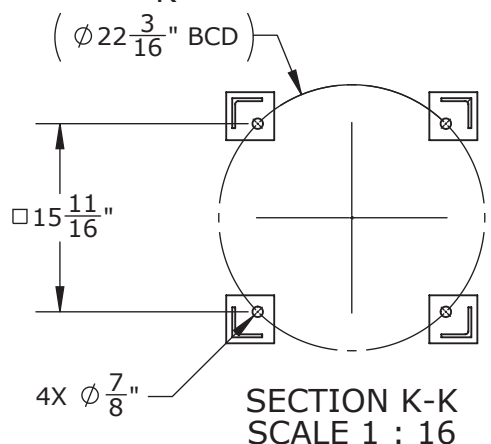
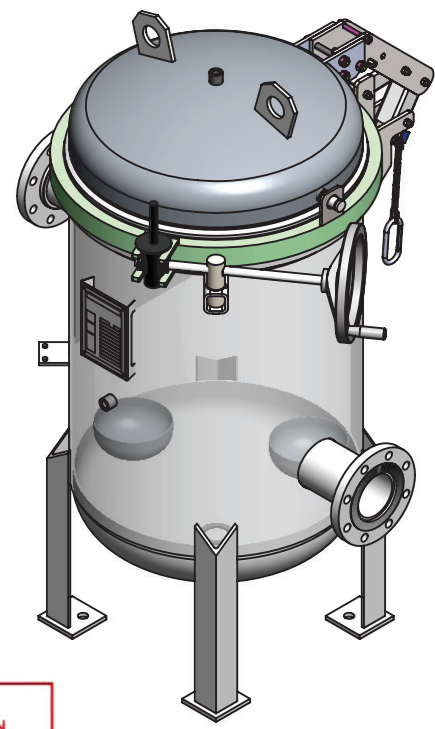
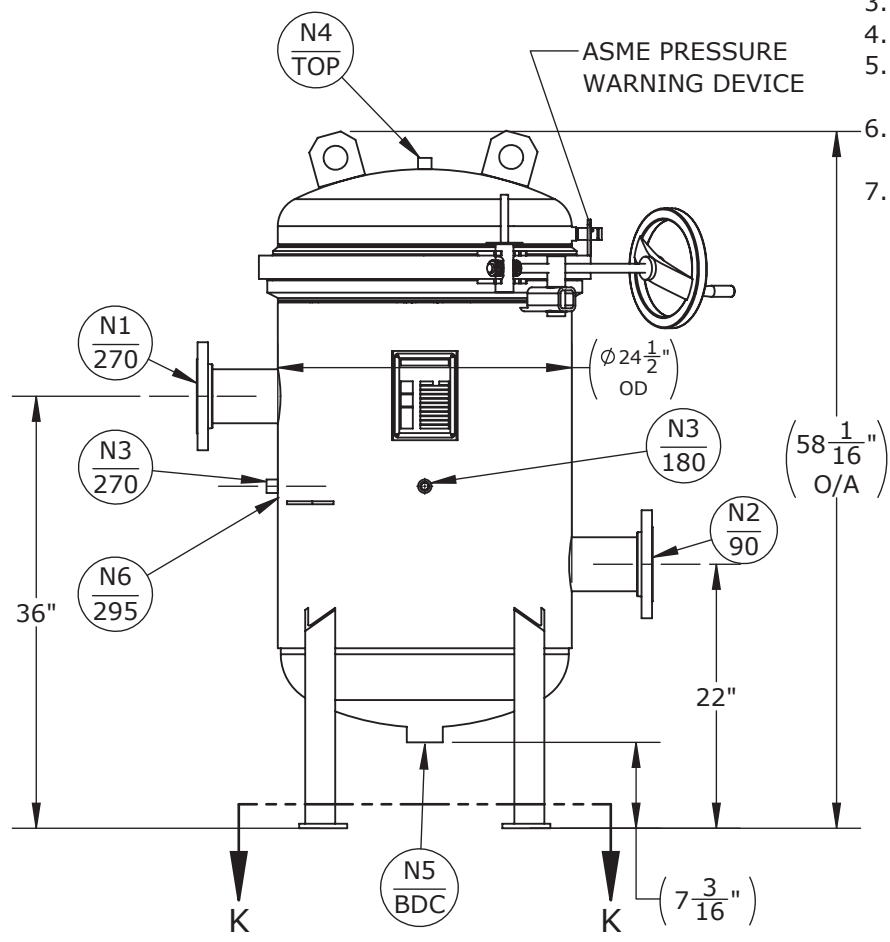


| NOZZLE SCHEDULE |     |                |                |
|-----------------|-----|----------------|----------------|
| MARK            | QTY | SIZE / RATING  | DESCRIPTION    |
| N1              | 1   | 4" 150# RFSO   | INLET          |
| N2              | 1   | 4" 150# RFSO   | OUTLET         |
| N3              | 2   | 1/2" 3000# NPT | PRESSURE GAUGE |
| N4              | 1   | 1/2" 3000# NPT | VENT           |
| N5              | 1   | 2" 3000# NPT   | CLEAN DRAIN    |
| N6              | 1   | 1/2" 3000# NPT | DIRTY DRAIN    |

| VESSEL DESIGN CONDITIONS |  |
|--------------------------|--|
| CODE:                    | ASME SECTION VIII DIV. 1, 2023 EDITION |
| M.A.W.P.:                | 150 PSI @ 350°F                        |
| M.D.M.T.:                | -20° F @ 150 PSI                       |
| M.A.W.P.:                | FV PSI @ 350°F                         |
| CORROSION ALLOWANCE:     | N/A                                    |
| HYDROTEST PRESS:         | 210 PSI                                |
| STAMP:                   | U                                      |
| SERVICE:                 | UNK. LIQUID, NON-LETHAL                |
| PWHT:                    | N/A                                    |
| RADIOGRAPHY:             | N/A                                    |
| MATERIAL:                | SS304                                  |
| GASKET:                  | VITON                                  |

- NOTES:**
- VESSEL DRY WEIGHT: **540 LBS**
  - VESSEL FLOODED WEIGHT: **1324.15 LBS**
  - VESSEL VOLUME: **12.64 FT<sup>3</sup>**
  - VESSEL SHIPPING WEIGHT: **570 LBS**
  - VESSEL WILL HOUSE (**QTY=7**) SIZE 2 BASKET SS304
  - EZ QUICK OPENING CLOSURE WITH SPRING ASSIST HEADLIFT
  - INCLUDES INDIVIDUAL LOCKING HOLD DOWNS FOR THE BAGS



**CERTIFIED BY**  
**FIL-TREK CORPORATION**  
 Name: Dhruvil Date: 2024-02-28

|  |  |                  |                   |                       |            |
|--|--|------------------|-------------------|-----------------------|------------|
| <br>THIRD ANGLE PROJECTION<br>TOLERANCES-UNLESS OTHERWISE NOTED<br>DECIMAL .X = ±.1" .XX = ±.02" .XXX = ±.005"<br>FRACTIONAL = ±1/8"<br>ANGULAR = ± 1°<br>MAX. MACHINED SURFACE FINISH 125/√ | <br><b>FIL-TREK CORPORATION</b><br>55 Stafford Court<br>Cambridge, Ontario<br>N1T 1B3<br>Canada<br>Phone: (519) 623-7448<br>Fax: (519) 623-8807<br>Email: info@fil-trek.com<br>Website: www.fil-trek.com                     |                  |                   |                       |            |
|  | THIS DRAWING IS THE PROPERTY OF 'FIL-TREK CORPORATION' AND MUST NOT BE COPIED OR USED IN ANY WAY DETRIMENTAL TO THE CORPORATION<br>EQUIPMENT: LP SERIES (BAG FILTER VESSEL)<br>MODEL NO: S4LP24-712-4F-A-150-EZ<br>CUSTOMER: |                  |                   |                       |            |
| PARENT: NONE   | DRAWN: DP  | DATE: 2024-02-21 | SERIAL No. V13843 | Part No. 002004-02141 | REV. No. 0 |
|  | CHK'D: TS  | SCALE: NTS       |                   |                       |            |