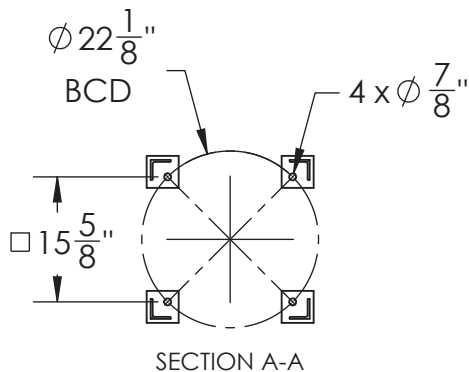
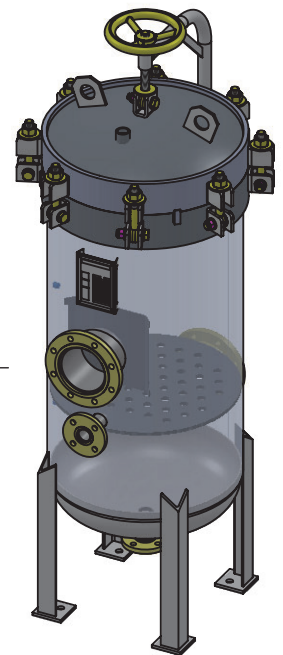
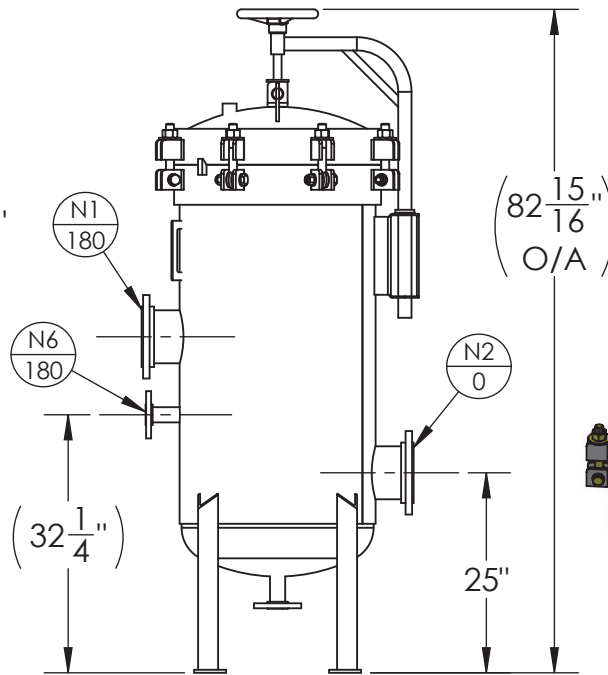
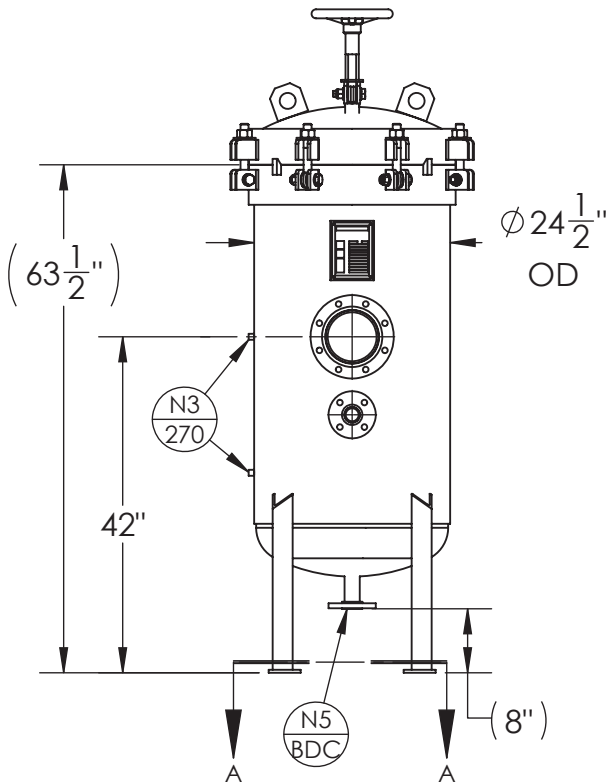


NOZZLE SCHEDULE			
MARK	QTY	SIZE / RATING	DESCRIPTION
N1	1	DIN150 PN10 RFSO	INLET
N2	1	DIN150 PN10 RFSO	OUTLET
N3	2	1/4" 3000# NPT	PRESSURE GAUGE
N4	1	1" 3000# NPT	VENT
N5	1	DIN40 PN10 RFSO	CLEAN DRAIN
N6	1	DIN40 PN10 RFSO	DIRTY DRAIN
VESSEL DESIGN CONDITIONS			
CODE: ASME SECTION VIII DIV. 1, 2021 EDITION			
M.A.W.P.: 150 PSI @ 250°F		M.D.M.T.: -20° F @ 150 PSI	
M.A.W.P.: FV PSI @ 250°F			
CORROSION ALLOWANCE: NONE		HYDROTEST PRESS: 195 PSI	
STAMP: U		SERVICE: UNK LIQUID NON LETHAL	
PWHT: N/A		RADIOGRAPHY: N/A	
MATERIAL: SS304		GASKET: BUNA-N	

NOTES:

- VESSEL WILL HOUSE (QTY=52) 2.5"OD x 30" LG DOE CARTRIDGE.
- VESSEL DRY WEIGHT: **743 LBS.**
- SHIPPING WEIGHT: 850 LBS.
- FLOODED WEIGHT: **1700 LBS.**
- VESSEL VOLUME: **15.5 FT³**



<p>THIRD ANGLE PROJECTION</p> <p>TOLERANCES-UNLESS OTHERWISE NOTED</p> <p>DECIMAL .X = ±.1" .XX = ±.02" .XXX = ±.005"</p> <p>FRACTIONAL = ±1/8"</p> <p>ANGULAR = ± 1°</p> <p>MAX. MACHINED SURFACE FINISH 125/√</p>	<p>FIL-TREK CORPORATION</p> <p>55 Stafford Court Cambridge, Ontario N1T 1B3 Canada</p> <p>Phone: (519) 623-7448 Fax: (519) 623-8807 Email: info@fil-trek.com Website: www.fil-trek.com</p>				
	<p>THIS DRAWING IS THE PROPERTY OF 'FIL-TREK CORPORATION' AND MUST NOT BE COPIED OR USED IN ANY WAY DETRIMENTAL TO THE CORPORATION</p> <p>EQUIPMENT: GL SERIES (CARTRIDGE FILTER VESSEL)</p> <p>MODEL NO: S4GL24-052-3-6F(DIN)-150</p> <p>CUSTOMER:</p>				
PARENT: NEW DESIGN	DRAWN: FL	DATE: 2020-09-22	SERIAL No.	Part No. 001001-01780	REV. No. 0
	CHK'D:	SCALE: NTS			