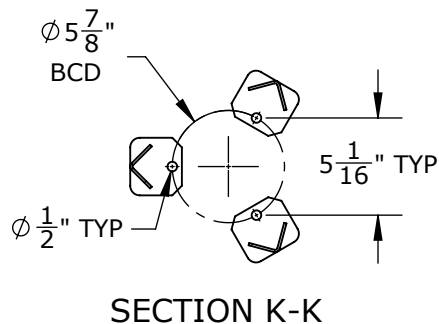
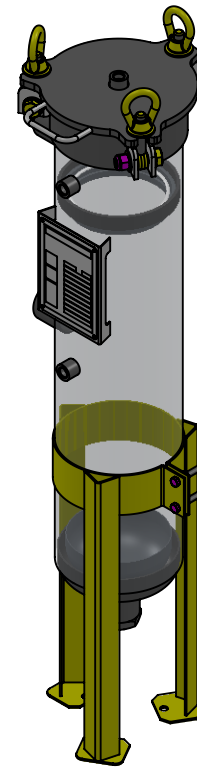
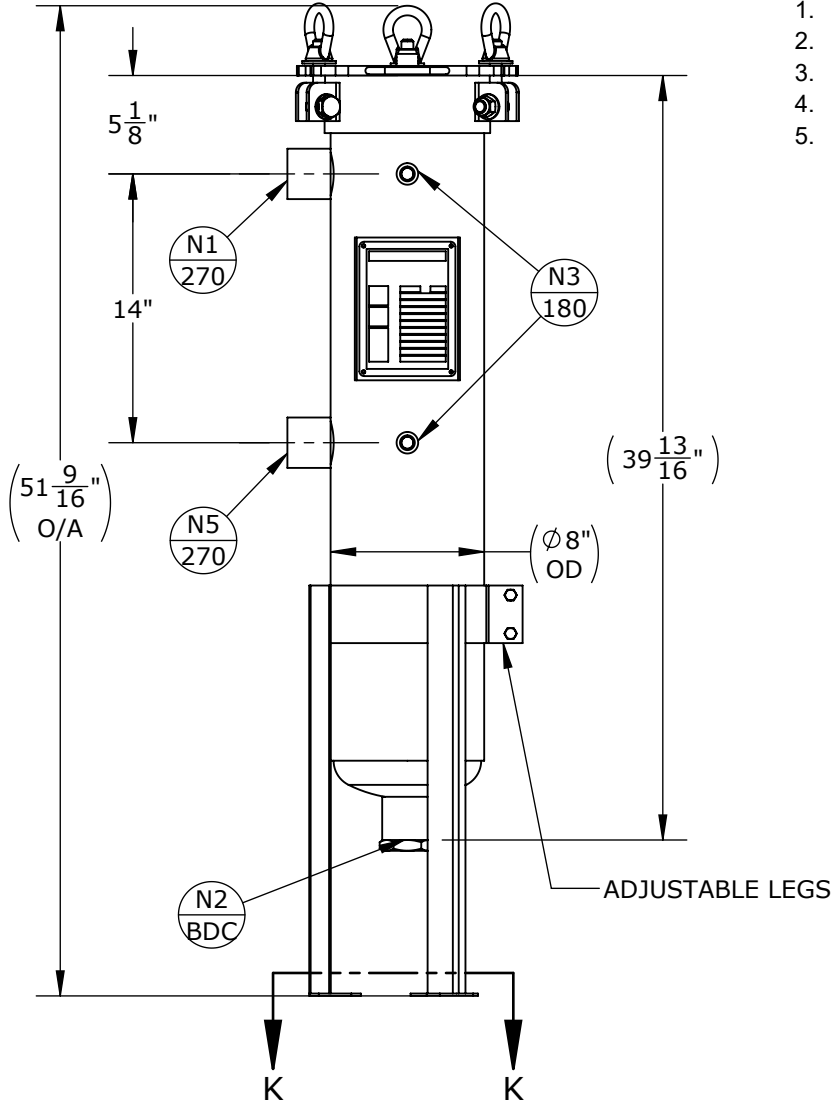


NOZZLE SCHEDULE			
MARK	QTY	SIZE / RATING	DESCRIPTION
N1	1	2" 150# NPT	INLET
N2	1	2" 150# NPT	OUTLET
N3	2	1/2" 3000# NPT	PRESSURE GAUGE
N4	1	1/2" 3000# NPT	VENT
N5	1	2" 150# NPT	SPARE

VESSEL DESIGN CONDITIONS			
CODE: BEST COMMERCIAL PRACTICE			
M.A.W.P.:	150 PSI @ 400°F	GASKET:	BUNA
M.A.W.P.:	FV PSI @ 400°F		
M.D.M.T.:	-20° F @ 150 PSI		
HYDROTEST PRESS:	195 PSI		
MATERIAL:	SS316		

NOTES:

1. VESSEL DRY WEIGHT: 83.000 LBS.
2. SHIPPING WEIGHT: 140 LBS.
3. FLOODED WEIGHT: 147 LBS.
4. VESSEL VOLUME: 1.05 CU. FT.
5. VESSEL WILL HOUSE (QTY=1) SIZE TWO SS316 BASKET



APPROVED WITH MARK-UPS <input type="checkbox"/>		APPROVED <input type="checkbox"/>	
<p>THIRD ANGLE PROJECTION</p> <p>TOLERANCES-UNLESS OTHERWISE NOTED</p> <p>DECIMAL .X = ±.1" .XX = ±.02" .XXX = ±.005"</p> <p>FRACTIONAL = ±1/8"</p> <p>ANGULAR = ± 1°</p> <p>MAX. MACHINED SURFACE FINISH 125/√</p>	<p>FIL-TREK CORPORATION</p> <p>55 Stafford Court Cambridge, Ontario N1T 1B3 Canada</p> <p>Phone: (519) 623-7448 Fax: (519) 623-8807 Email: info@fil-trek.com Website: www.fil-trek.com</p>		
	<p>THIS DRAWING IS THE PROPERTY OF 'FIL-TREK CORPORATION' AND MUST NOT BE COPIED OR USED IN ANY WAY DETRIMENTAL TO THE CORPORATION</p>		
EQUIPMENT:		ESL SERIES (SINGLE BAG FILTER VESSEL)	
MODEL NO:		S6ESL112-2P-CDB-150	
CUSTOMER:		STOCK	
PARENT: NONE	DRAWN: JG	DATE: 2024-03-06	SERIAL No. Part No. 002001-18522
CHK'D: TS	SCALE: NTS		REV. No. 0