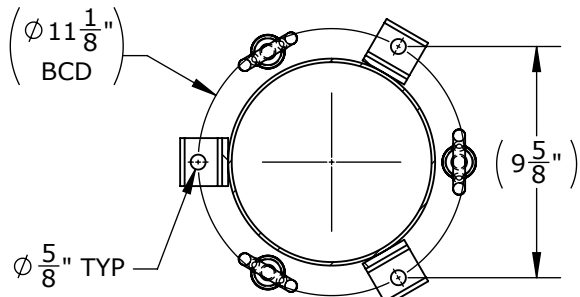
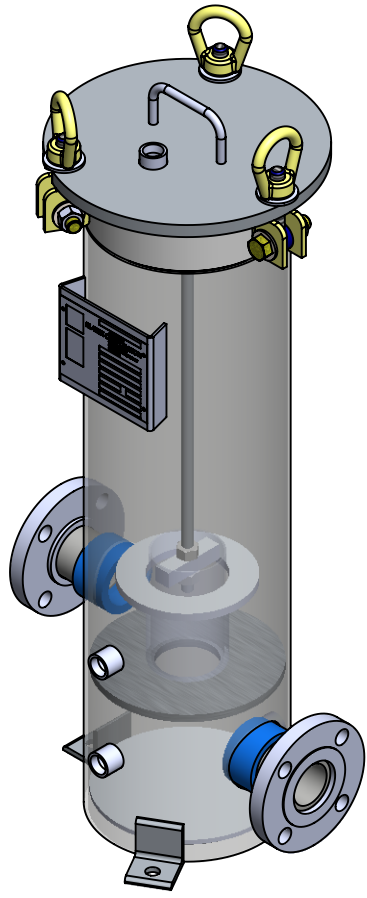
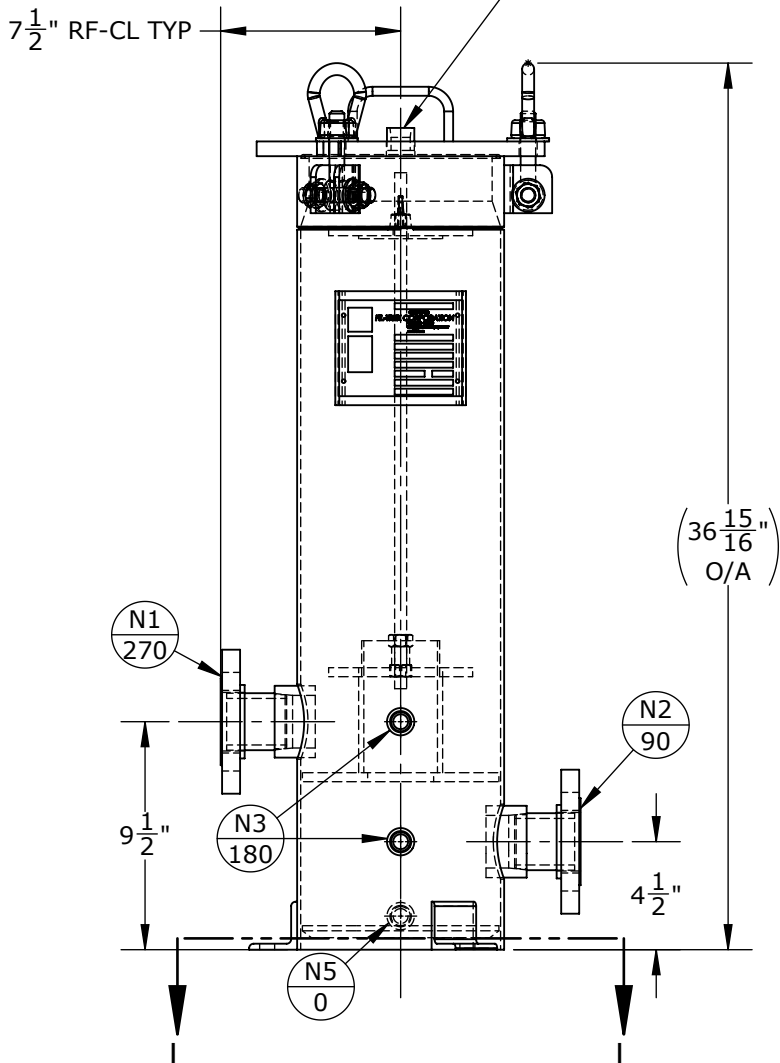


NOZZLE SCHEDULE			
MARK	QTY	SIZE / RATING	DESCRIPTION
N1	1	2" 150# RFSO	INLET
N2	1	2" 150# RFSO	OUTLET
N3	2	1/2" 3000# NPT	PRESSURE GAUGE
N4	1	1/2" 3000# NPT	VENT
N5	1	1/2" 3000# NPT	CLEAN DRAIN
N6	0	-	DIRTY DRAIN

VESSEL DESIGN CONDITIONS			
CODE: ASME SECTION VIII DIV. 1, 2015 EDITION			
M.A.W.P.: 150 PSI @ 250°F		M.D.M.T.: -20° F @ 150 PSI	
M.A.W.P.: FV PSI @ 250°F			
CORROSION ALLOWANCE: NONE		HYDROTEST PRESS: 195 PSI	
STAMP: UM		SERVICE: NONE	
PWHT: N/A		RADIOGRAPHY: N/A	
MATERIAL: SS304		GASKET: VITON	

- NOTES:
1. VESSEL WILL HOUSE (QTY=1) DOUBLE LENGTH BASKET.
 2. DRY WEIGHT: 94.65 LBS
 3. FLOODED WEIGHT: 130 LBS
 4. SHIPPING WEIGHT: 120 LBS
 5. VESSEL VOLUME: 1 FT³



SECTION L-L

<p>THIRD ANGLE PROJECTION</p> <p>TOLERANCES-UNLESS OTHERWISE NOTED</p> <p>DECIMAL .X = ±.1" .XX = ±.02" .XXX = ±.005"</p> <p>FRACTIONAL = ±1/8"</p> <p>ANGULAR = ± 1°</p> <p>MAX. MACHINED SURFACE FINISH 125/√</p>	<p>FIL-TREK CORPORATION</p> <p>55 Stafford Court Cambridge, Ontario N1T 1B3 Canada</p> <p>Phone: (519) 623-7448 Fax: (519) 623-8807 Email: info@fil-trek.com Website: www.fil-trek.com</p>			
	<p>THIS DRAWING IS THE PROPERTY OF 'FIL-TREK CORPORATION' AND MUST NOT BE COPIED OR USED IN ANY WAY DETRIMENTAL TO THE CORPORATION</p> <p>EQUIPMENT: CARTRIDGE VESSEL (VF SERIES)</p> <p>MODEL NO: S4VF08-01-618-2F-150</p> <p>CUSTOMER:</p>			
<p>PARENT: NEW DESIGN</p>	<p>DRAWN: JC</p> <p>CHK'D: VD</p>	<p>DATE: 03/05/2017</p> <p>SCALE: NTS</p>	<p>SERIAL No.</p> <p>Part No. 001020-00024</p>	<p>REV. No. 0</p>