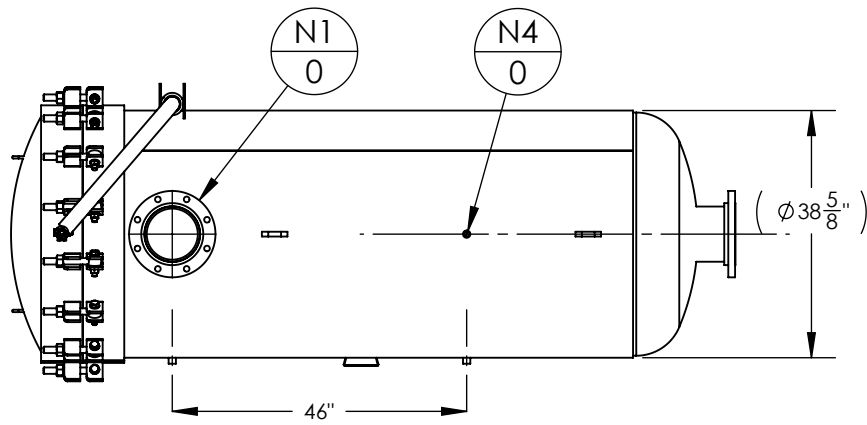
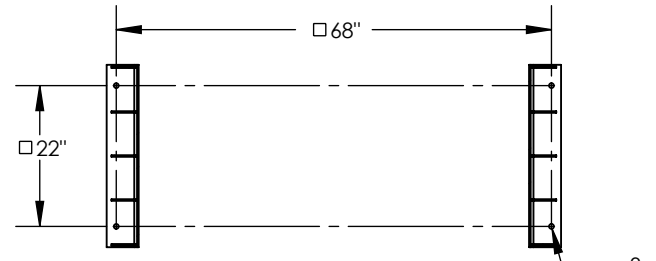
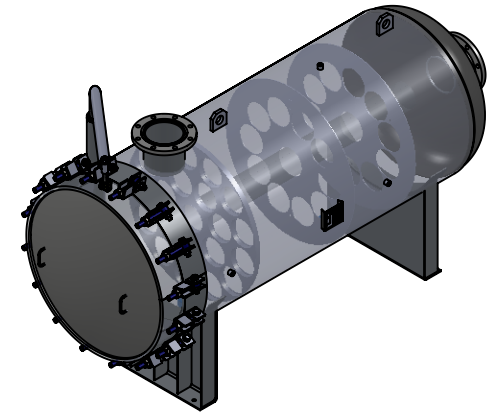
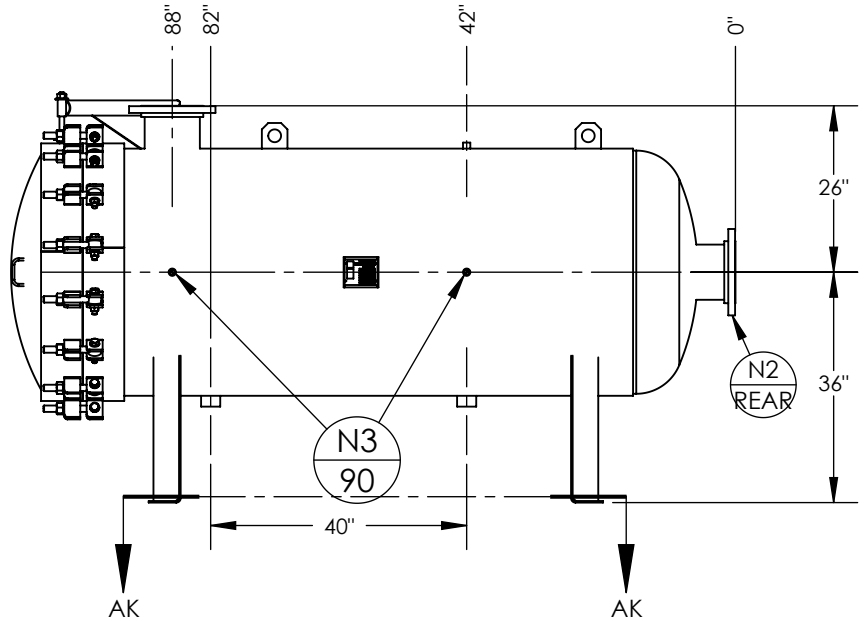
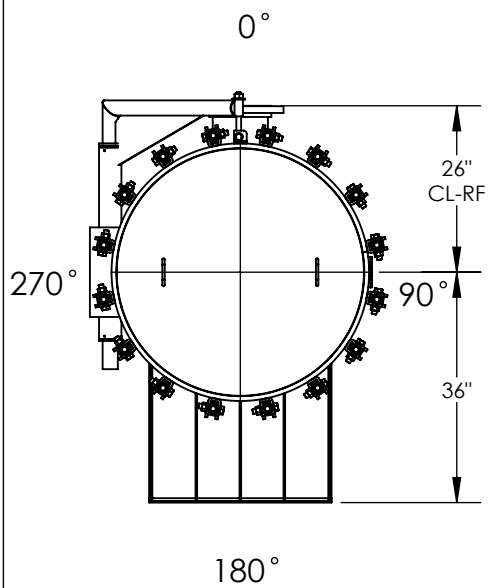


1. DRY WEIGHT: 1854 LBS
2. FLOODED WEIGHT: 7500 LBS
3. SHIPPING WEIGHT: 2000 LBS
4. VESSEL VOLUME: 53 C.F.
5. REMOVABLE SS316 BASKETS
6. VESSEL WILL HOUSE 6" OD X 60 LG HIGHFLOW CARTRIDGES (QTY-21)



NOZZLE SCHEDULE			
MARK	QTY	SIZE / RATING	DESCRIPTION
N1	1	8" 150# RF50	INLET
N2	1	8" 150# RF50	OUTLET
N3	2	1/2" 3000# NPT	PRESSURE GAUGE
N4	1	1/2" 3000# NPT	VENT
N5	1	2" 3000# NPT	CLEAN DRAIN
N6	1	2" 3000# NPT	DIRTY DRAIN

VESSEL DESIGN CONDITIONS			
CODE: ASME SECTION VIII DIV. 1, 2015 EDITION			
M.A.W.P.:	150 PSI @ 250°F	M.D.M.T.:	-20° F @ 150 PSI
M.A.E.P.:	15 PSI @ 250°F		
CORROSION ALLOWANCE:	N/A	HYDROTEST PRESS:	195 PSI
STAMP:	UM	SERVICE:	NON LETHAL
PWHT:	N/A	RADIOGRAPHY:	NONE
MATERIAL:	SS316	GASKET:	BUNA



SECTION AK-AK
SCALE 1 : 30

APPROVED WITH MARK-UPS APPROVED

THIRD ANGLE PROJECTION

TOLERANCES-UNLESS OTHERWISE NOTED

DECIMAL .X = ±.1"
.XX = ±.02"
.XXX = ±.005"

FRACTIONAL = ± 1/8"

ANGULAR = ± 1°

MAX. MACHINED SURFACE FINISH 125 √

FIL-TREK CORPORATION

55 Stafford Court
Cambridge, Ontario
N1T 1B3
Canada

Phone: (519) 623-7448
Fax: (519) 623-8807
Email: info@fil-trek.com
Website: www.fil-trek.com

THIS DRAWING IS THE PROPERTY OF 'FIL-TREK CORPORATION' AND MUST NOT BE COPIED OR USED IN ANY WAY DETRIMENTAL TO THE CORPORATION

EQUIPMENT: ULTRAFLOW CARTRIDGE FILTER VESSEL (UFH SERIES)

MODEL NO: S6UFH38-21-60-8F-150

CUSTOMER:

DRAWN: MS	DATE: 5/26/2017	SERIAL No.	Part. No. 001012-00028
PARENT: NEW DESIGN	CHK'D:	SCALE: NTS	REV. No. 0