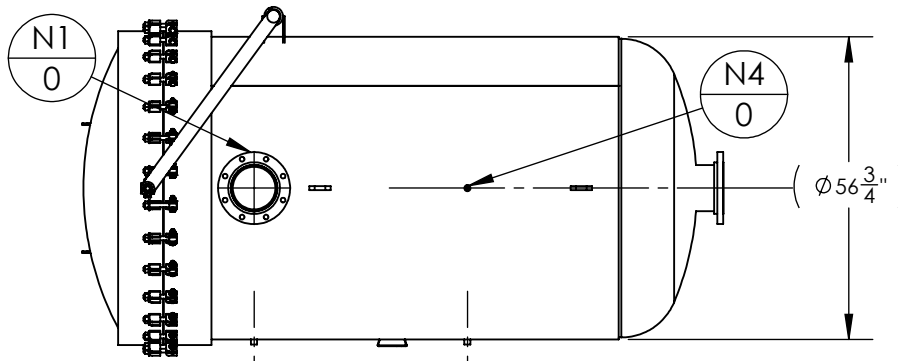
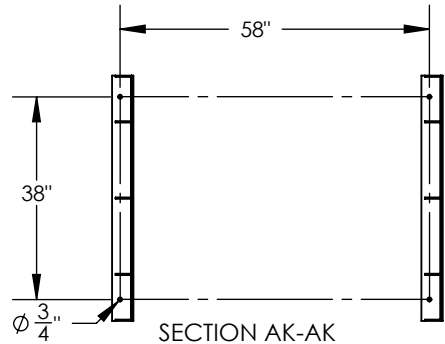
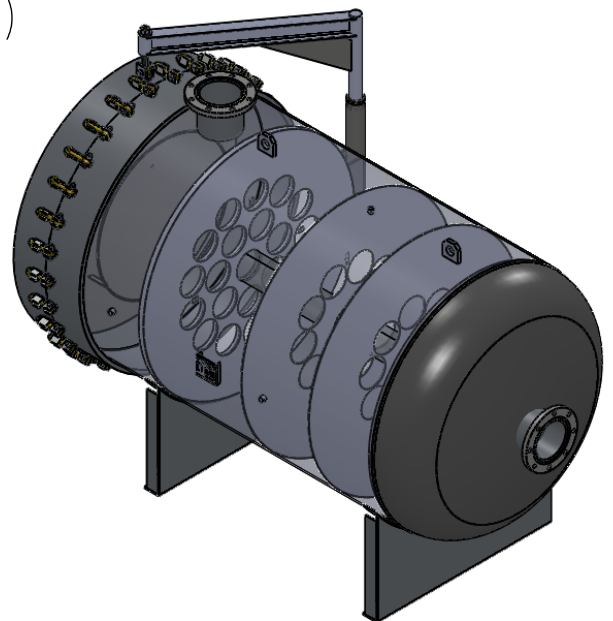
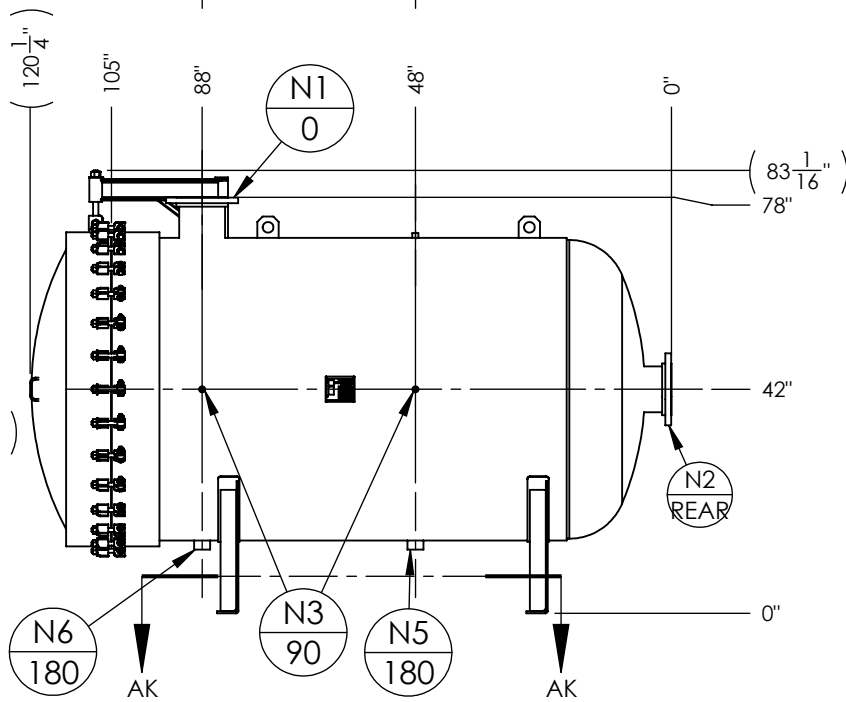
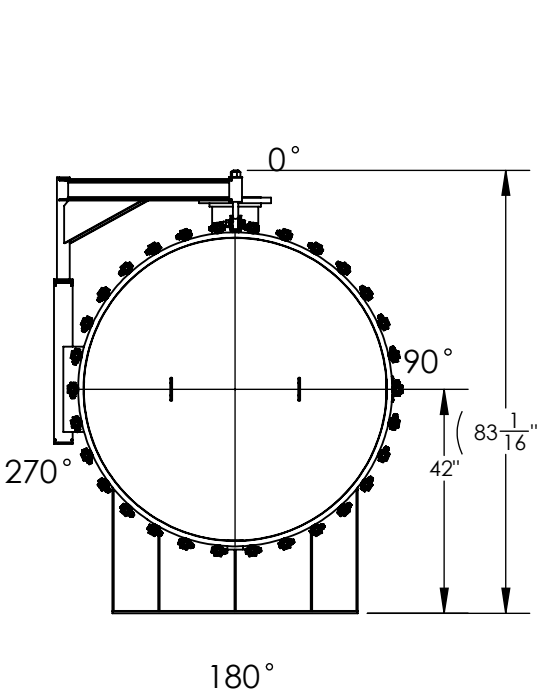


1. DRY WEIGHT: 3520 LBS
2. FLOODED WEIGHT: 12000 LBS
3. SHIPPING WEIGHT: 4000 LBS
4. VESSEL VOLUME: 120 C.F.
5. REMOVABLE SS316 BASKETS
6. VESSEL WILL HOUSE 6" OD X 60 LG HIGHFLOW CARTRIDGES (QTY-43)



NOZZLE SCHEDULE			
MARK	QTY	SIZE / RATING	DESCRIPTION
N1	1	8" 150# RFSO	INLET
N2	1	8" 150# RFSO	OUTLET
N3	2	1/2" 3000# NPT	PRESSURE GAUGE
N4	1	1/2" 3000# NPT	VENT
N5	1	2" 3000# NPT	CLEAN DRAIN
N6	1	2" 3000# NPT	DIRTY DRAIN

VESSEL DESIGN CONDITIONS		
CODE: ASME SECTION VIII DIV. 1, 2015 EDITION		
M.A.W.P.:	150 PSI @ 400°F	M.D.M.T.: -20° F @ 150 PSI
M.A.E.P.:	FV PSI @ 400°F	
CORROSION ALLOWANCE:	N/A	HYDROTEST PRESS: 195 PSI
STAMP:	U	SERVICE: NON LETHAL
PWHT:	N/A	RADIOGRAPHY: NONE
MATERIAL:	SS316	GASKET: BUNA



SECTION AK-AK
SCALE 1 : 36

APPROVED WITH MARK-UPS <input type="checkbox"/>		APPROVED <input type="checkbox"/>	
 THIRD ANGLE PROJECTION	 FIL-TREK CORPORATION		
	55 Stafford Court Cambridge, Ontario N1T 1B3 Canada		Phone: (519) 623-7448 Fax: (519) 623-8807 Email: info@fil-trek.com Website: www.fil-trek.com
TOLERANCES-UNLESS OTHERWISE NOTED DECIMAL .X = ±.1" .XX = ±.02" .XXX = ±.005" FRACTIONAL = ±1/8" ANGULAR = ± 1° MAX. MACHINED SURFACE FINISH 125 \sqrt			
THIS DRAWING IS THE PROPERTY OF 'FIL-TREK CORPORATION' AND MUST NOT BE COPIED OR USED IN ANY WAY DETRIMENTAL TO THE CORPORATION			
EQUIPMENT:		ULTRAFLOW CARTRIDGE FILTER VESSEL (UFH SERIES)	
MODEL NO:		S6UFH56-43-60-8F-150	
CUSTOMER:			
PARENT: NEW DESIGN	DRAWN: VD	DATE: 6/14/2017	SERIAL No. -
CHK'D:	SCALE: NTS	Part. No. 001012-00030	REV. No. 0