



POEL

Extended Life Bag Filters

- Dual gradient polypropylene depth media
- Manufactured in the USA
- Designed to fit most housing brands

Built for high dirt loading applications while extending the filter life and change out occurrences.



SUITABLE USES



Air & Gas



Desalination



Coolant



Water



Electronics



Coatings



Oil & Gas



Chemical



Pulp & Paper



Power



Marine



Equipment

ADDITIONAL FEATURES

- Adds an additional 890 cubic inches of depth filtration compared to our Mera Felt filters.
- Available in 1 to 200 micron ratings.
- Dual gradient depth media that has been manufactured for maximum dirt loading capacity, up to 8.2 lbs flowing at max. 125 GPM.
- Removes tramp oils from water with fine fiber dual gradient media, up to 30 lbs flowing at max. 50 GPM.
- Choice of four different top rings.
- Reduces the number of change outs that is required, extending filter life and saving on labor costs.
- Available in P1 and P2 lengths and compatible with most industry standard bag housings.

For more information, e-mail:
info@fil-trek.com or visit Fil-Trek.com

- Dual gradient polypropylene depth media
- Manufactured in the USA
- Designed to fit most housing brands

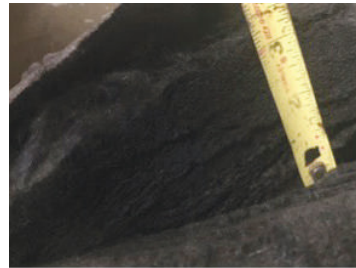


STANDARD SPECIFICATIONS

MAX. DIFFERENTIAL PRESSURE	35 PSID @ 200°F (93°C)
MAX. OPERATING TEMPERATURE	Polypropylene @200°F (93°C)
MAX. FLOW RATE	Oil Removal - 50 GPM (size 2) All other applications up to 125 GPM
PRESSURE LOSS	< 50 GPM should have no pressure loss on initial flow.
DIMENSIONS	
Available Lengths	Refer to nomenclature chart
SURFACE AREA	Up to 890 in ³ (size 2)
MEDIA	Polypropylene felt
FLANGE/RING	Carbon Steel Polypropylene Stainless Steel Polyethylene
MICRON RATINGS	1, 5, 10, 25, 50, 75, 100, 200

TESTING

This image shows the dirt loading characteristics throughout the entire 2" thickness of the melt blown media portion of the POEL bag.



This image is a close up of the same media showing a complete loading of the filter cartridge.



This image shows the outer part of the bag filter. It still has white areas. The outer bag is a support layer for the internal melt blown filter cartridge and is not expected to be full of contaminate, which happens with low efficiency filter bags.



RESULTS

The bag was weighed after a complete drying period. The weight difference between the spent element and a new filter was 3713 grams (8.19 lbs). The element has captured a significant amount of particulate.

PRODUCT NOMENCLATURE

POEL	25	2	SS	
SERIES POEL Series	MICRON 1 5 10 25 50 75 100 200	SIZE 1 - 7.063" dia X 16.5" lg 2 - 7.063" dia X 27" lg 12 - 8.125" dia X 27"lg	FLANGE/RING CS—Carbon steel ring (std) SS—Stainless steel ring PO—Polypropylene ring PS -Plastic flange	HANDLE/FINISH OPTIONS Blank - Single handle (std) DH - Double handle