

SECTION C-C

NOZZLE SCHEDULE

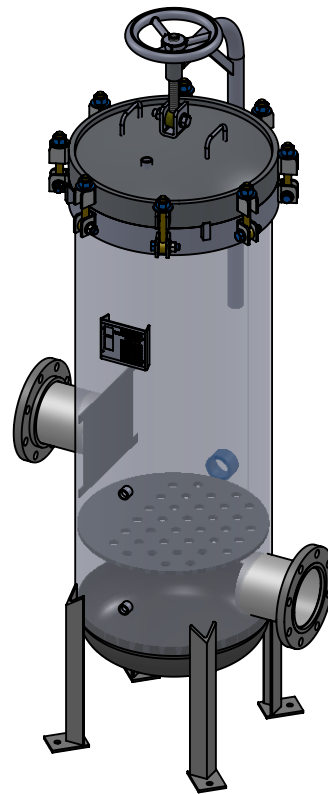
MARK	QTY	SIZE / RATING	DESCRIPTION
N1	1	6" 150# RFSO	INLET
N2	1	6" 150# RFSO	OUTLET
N3	2	1/2" 3000# NPT	PRESSURE GAUGE
N4	1	1/2" 3000# NPT	VENT
N5	1	2" 3000# NPT	CLEAN DRAIN
N6	1	2" 3000# NPT	DIRTY DRAIN

VESSEL DESIGN CONDITIONS

CODE: ASME SECTION VIII DIV. 1, 2015 EDITION	
M.A.W.P.: 150 PSI @ 400°F	M.D.M.T.: -20° F @ 150 PSI
M.A.W.P.: FV PSI @ 400°F	
CORROSION ALLOWANCE: NONE	HYDROTEST PRESS: 195 PSI
STAMP: UM	SERVICE: NON LETHAL
PWHT: N/A	RADIOGRAPHY: N/A
MATERIAL: SS316	GASKET: BUNA

NOTES:

- VESSEL WILL HOUSE (QTY=35) 2.5"OD x 40" LG DOE CARTRIDGE.
- DRY WEIGHT: **544.42** LBS.
- SHIPPING WEIGHT: **120** LBS.
- FLOODED WEIGHT: **100** LBS.
- VESSEL VOLUME: **0.4** CU. FT.
- SS316 / XYLAN BOLTING
- PICKLED AND PASSIVATED INSIDE AND OUT
- ELECTROPOLISHED INSIDE AND OUT



APPROVED WITH MARK-UPS APPROVED

THIRD ANGLE PROJECTION	
TOLERANCES-UNLESS OTHERWISE NOTED	
DECIMAL	.X = ±.1" .XX = ±.02" .XXX = ±.005"
FRACTIONAL	= ±1/8"
ANGULAR	= ± 1°
MAX. MACHINED SURFACE FINISH	125/√

FIL-TREK CORPORATION	
55 Stafford Court Cambridge, Ontario N1T 1B3 Canada	
Phone: (519) 623-7448 Fax: (519) 623-8807 Email: info@fil-trek.com Website: www.fil-trek.com	
THIS DRAWING IS THE PROPERTY OF 'FIL-TREK CORPORATION' AND MUST NOT BE COPIED OR USED IN ANY WAY DETRIMENTAL TO THE CORPORATION	
EQUIPMENT: MP SERIES (CARTRIDGE FILTER VESSEL)	
MODEL NO: L6MP35-4-6F-150	
CUSTOMER:	

PARENT: NEW DESIGN	DRAWN: MS	DATE: 07/14/2017	SERIAL No.	Part No. 001006-00012	REV. No. 0
CHK'D:	SCALE: NTS				