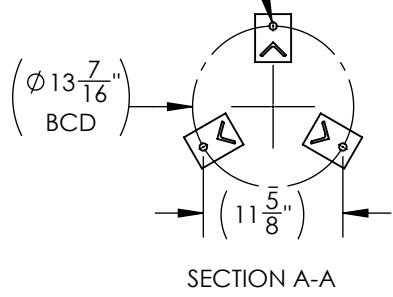
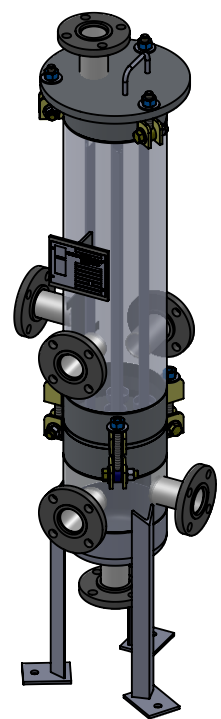
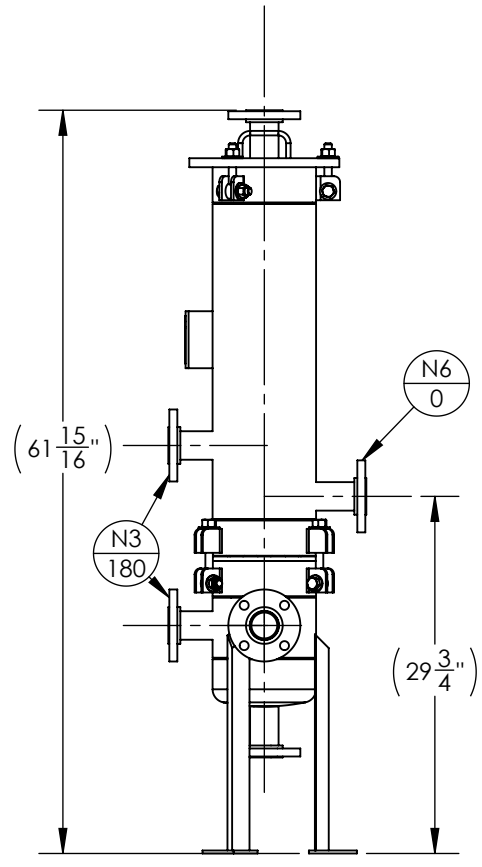
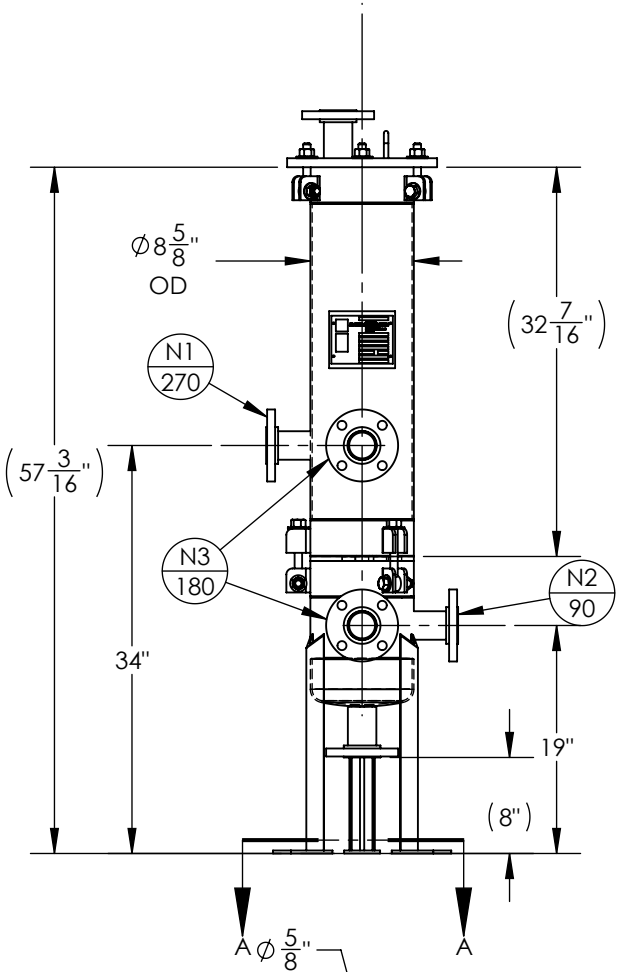


NOZZLE SCHEDULE			
MARK	QTY	SIZE / RATING	DESCRIPTION
N1	1	2" 150# FFSO	INLET
N2	1	2" 150# FFSO	OUTLET
N3	2	2" 150# FFSO	PRESSURE GAUGE
N4	1	2" 150# FFSO	VENT
N5	1	2" 150# FFSO	CLEAN DRAIN
N6	1	2" 150# FFSO	DIRTY DRAIN

VESSEL DESIGN CONDITIONS	
CODE: ASME SECTION VIII DIV. 1, 2015 EDITION	
M.A.W.P.: 150 PSI @ 250°F	M.D.M.T.: -20° F @ 150 PSI
M.A.W.P.: FV PSI @ 250°F	
CORROSION ALLOWANCE: NONE	HYDROTEST PRESS: 195 PSI
STAMP: UM	SERVICE: -
PWHT: N/A	RADIOGRAPHY: NONE
MATERIAL: CS	GASKET: BUNA

- NOTES:
- VESSEL WILL HOUSE (QTY=4) 2.5" OD x 30" LG CARTRIDGES.
 - DRY WEIGHT: 176.85 LBS
 - FLOODED WEIGHT: 310 LBS
 - SHIPPING WEIGHT: 200 LBS
 - VESSEL VOLUME: 1.5 FT³
 - RUBBER LINED



APPROVED WITH MARK-UPS APPROVED

<p>THIRD ANGLE PROJECTION</p> <p>TOLERANCES-UNLESS OTHERWISE NOTED</p> <p>DECIMAL .X = ±.1" .XX = ±.02" .XXX = ±.005"</p> <p>FRACTIONAL = ±1/8"</p> <p>ANGULAR = ± 1°</p> <p>MAX. MACHINED SURFACE FINISH 125/√</p>	<p>FIL-TREK CORPORATION</p> <p>55 Stafford Court Cambridge, Ontario N1T 1B3 Canada</p> <p>Phone: (519) 623-7448 Fax: (519) 623-8807 Email: info@fil-trek.com Website: www.fil-trek.com</p>				
	<p>THIS DRAWING IS THE PROPERTY OF 'FIL-TREK CORPORATION' AND MUST NOT BE COPIED OR USED IN ANY WAY DETRIMENTAL TO THE CORPORATION</p> <p>EQUIPMENT: CATRIDGE FILTER VESSEL (L SERIES)</p> <p>MODEL NO: L08-004-3-2F-RL-150</p> <p>CUSTOMER:</p>				
PARENT:	DRAWN: MS	DATE: 7/9/2017	SERIAL No.	Part No. 001004-00011	REV. No.
CHK'D:	SCALE: NTS				