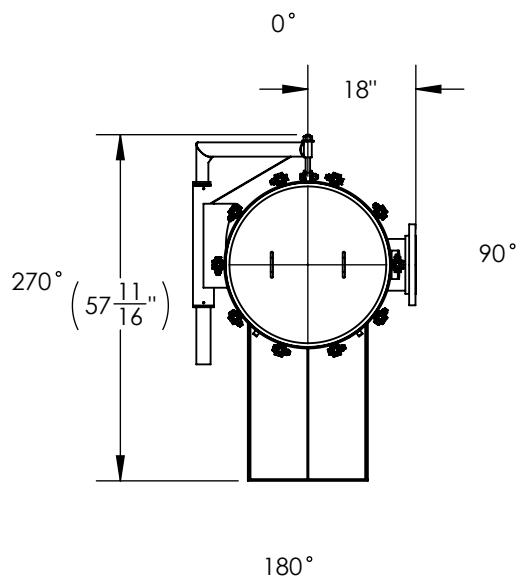


SECTION F-F
SCALE 1 : 25



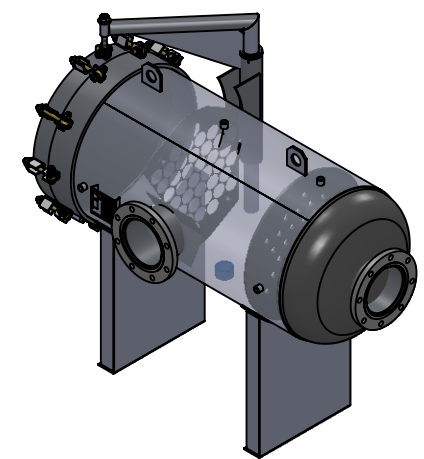
NOZZLE SCHEDULE			
MARK	QTY	SIZE / RATING	DESCRIPTION
N1	1	8"150# RFSO	INLET
N2	1	8"150# RFSO	OUTLET
N3	2	1/2" 3000# NPT	PRESSURE GAUGE
N4	1	1/2" 3000# NPT	VENT
N5	1	2" 3000# NPT	CLEAN DRAIN
N6	1	2" 3000# NPT	DIRTY DRAIN

VESSEL DESIGN CONDITIONS	
CODE:	ASME SECTION VIII DIV. 1, 2015 EDITION
M.A.W.P.:	150 PSI @ 250°F
M.A.E.P.:	15 PSI @ 250°F
CORROSION ALLOWANCE:	NONE
STAMP:	NONE
PWHT:	N/A
MATERIAL:	SS304

M.D.M.T.:	-20° F @ 150 PSI
HYDROTEST PRESS:	195 PSI
SERVICE:	NON LETHAL
RADIOGRAPHY:	N/A
GASKET:	BUNA

NOTES

- DRY WEIGHT: 762.92 #S
- SHIPPING WEIGHT: 800 #S
- FLOODED WEIGHT: 1400 #S
- VESSEL VOLUME: 9 C.F.
- VESSEL WILL HOUSE (QTY=62) 2.5" OD x 40" LG CARTRIDGES



<p>THIRD ANGLE PROJECTION</p>	<p>FIL-TREK CORPORATION</p>	
	<p>55 Stafford Court Cambridge, Ontario N1T 1B3 Canada</p> <p>Phone: (519) 623-7448 Fax: (519) 623-8807 Email: info@fil-trek.com Website: www.fil-trek.com</p>	
<p>TOLERANCES-UNLESS OTHERWISE NOTED</p> <p>DECIMAL .X = ±.1" .XX = ±.02" .XXX = ±.005"</p> <p>FRACTIONAL = ±1/8"</p> <p>ANGULAR = ± 1°</p> <p>MAX. MACHINED SURFACE FINISH 125 √</p>		
<p>THIS DRAWING IS THE PROPERTY OF 'FIL-TREK CORPORATION' AND MUST NOT BE COPIED OR USED IN ANY WAY DETRIMENTAL TO THE CORPORATION</p>		
EQUIPMENT:		CARTRIDGE FILTER VESSEL (GLH SERIES)
MODEL NO:		S4GLH26-062-4-8F-150
CUSTOMER:		
PARENT: NEW DESIGN	DRAWN: MS	DATE: 6/1/2017
CHK'D:	SCALE: NTS	SERIAL No.
		Part. No. 001002-00016
		REV. No. 0