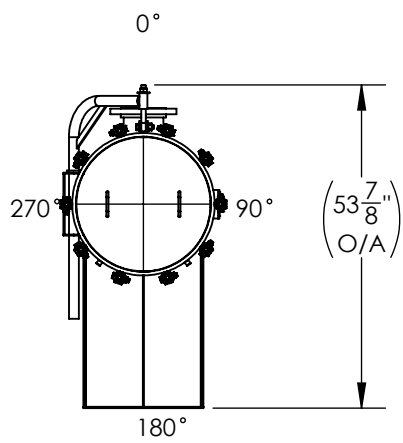


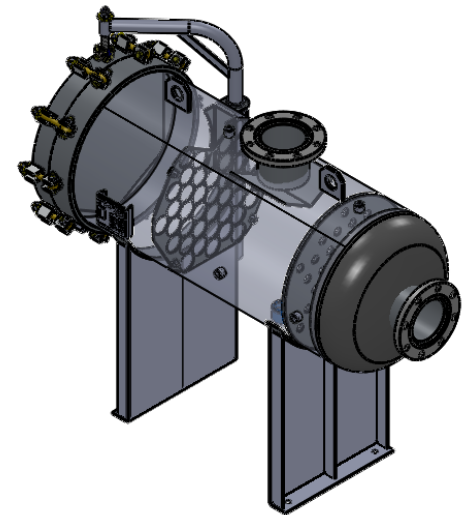
SECTION F-F
SCALE 1 : 25



NOZZLE SCHEDULE			
MARK	QTY	SIZE / RATING	DESCRIPTION
N1	1	6"150# RFSO	INLET
N2	1	6"150# RFSO	OUTLET
N3	2	1/2" 3000# NPT	PRESSURE GAUGE
N4	2	1/2" 3000# NPT	VENT
N5	1	2" 3000# NPT	CLEAN DRAIN
N6	1	2" 3000# NPT	DIRTY DRAIN

VESSEL DESIGN CONDITIONS			
CODE: ASME SECTION VIII DIV. 1, 2015 EDITION			
M.A.W.P.:	150 PSI @ 250°F	M.D.M.T.:	-20° F @ 150 PSI
M.A.E.P.:	15 PSI @ 250°F		
CORROSION ALLOWANCE:	NONE	HYDROTEST PRESS:	195 PSI
STAMP:	U	SERVICE:	NON LETHAL
PWHT:	N/A	RADIOGRAPHY:	N/A
MATERIAL:	SS 316	GASKET:	BUNA-N

- NOTES
- DRY WEIGHT: 538.23 #S
 - SHIPPING WEIGHT: 600 #S
 - FLOODED WEIGHT: 1400 #S
 - VESSEL VOLUME: 10.8 C.F.
 - VESSEL WILL HOUSE (QTY=42) 2.5" OD x 40" LG CARTRIDGES



<p>THIRD ANGLE PROJECTION</p> <p>TOLERANCES-UNLESS OTHERWISE NOTED</p> <p>DECIMAL .X = ±.1"</p> <p>.XX = ±.02"</p> <p>.XXX = ±.005"</p> <p>FRACTIONAL = ±1/8"</p> <p>ANGULAR = ± 1°</p> <p>MAX. MACHINED SURFACE FINISH 125</p>	<p>FIL-TREK CORPORATION</p> <p>55 Stafford Court Cambridge, Ontario N1T 1B3 Canada</p> <p>Phone: (519) 623-7448 Fax: (519) 623-8807 Email: info@fil-trek.com Website: www.fil-trek.com</p>				
	<p>THIS DRAWING IS THE PROPERTY OF 'FIL-TREK CORPORATION' AND MUST NOT BE COPIED OR USED IN ANY WAY DETRIMENTAL TO THE CORPORATION</p> <p>EQUIPMENT: CARTRIDGE FILTER VESSEL (GLH SERIES)</p> <p>MODEL NO: S6GLH22-042-4-6F-150</p> <p>CUSTOMER:</p>				
PARENT: NEW DESIGN	DRAWN: VD CHK'D: CW	DATE: 1/26/2017 SCALE: NTS	SERIAL No.	Part. No. 001002-00013	REV. No. 0