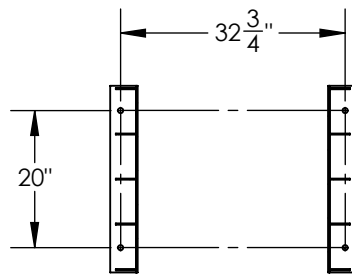
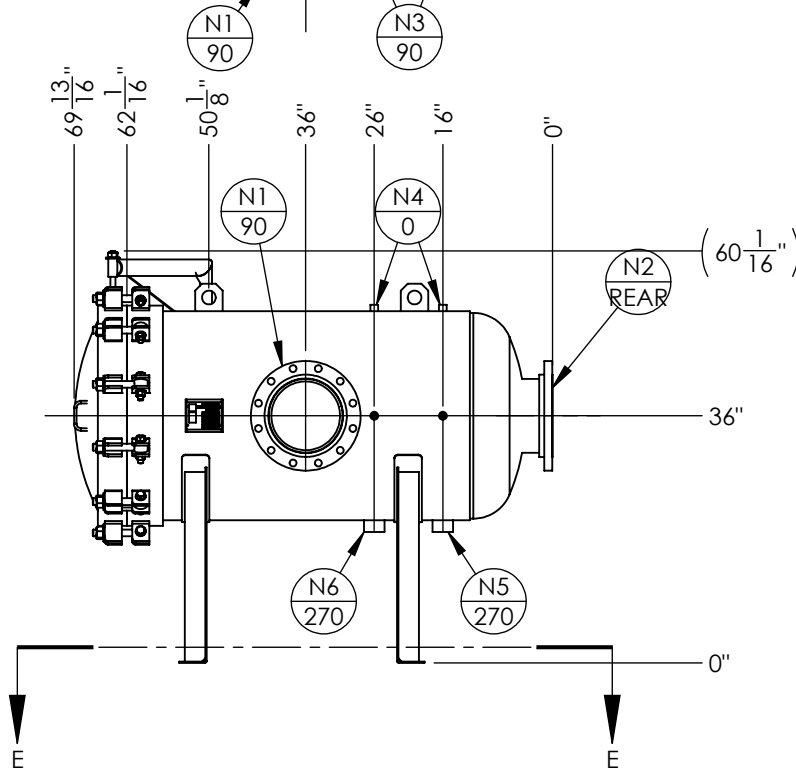
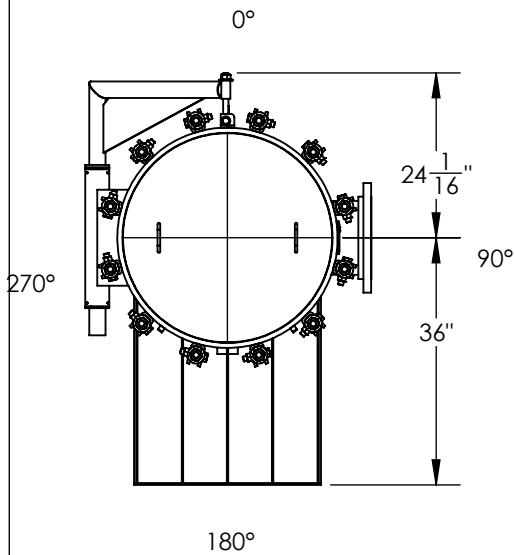
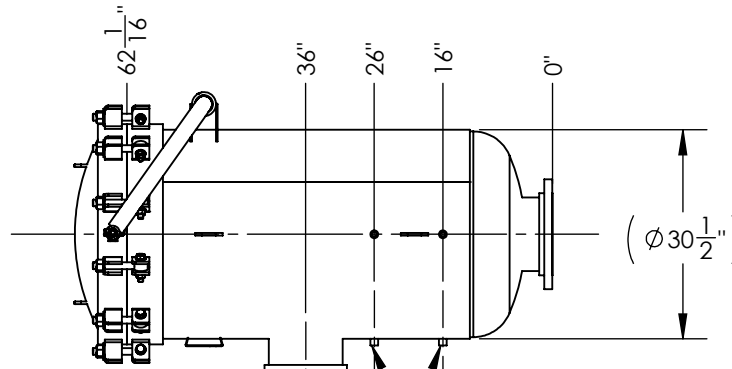


NOTES:

1. VESSEL WILL HOUSE (QTY=87) 2 1/2" x 40" LG CARTRIDGES.
2. DRY WEIGHT: , 1138.74 LBS
3. SHIPPING WEIGHT: 1650 LBS
4. FLOODED WEIGHT: 2350 LBS
5. VESSEL VOLUME: 20.9 C.F.



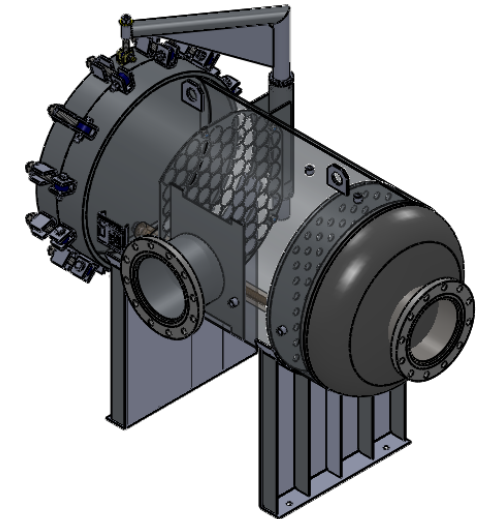
SECTION E-E  
SCALE 1 : 28

NOZZLE SCHEDULE			
MARK	QTY	SIZE / RATING	DESCRIPTION
N1	1	10" 150# RFSO	INLET
N2	1	10" 150# RFSO	OUTLET
N3	2	1/2" 3000# NPT	PRESSURE GAUGE
N4	1	1/2" 3000# NPT	VENT
N5	1	2" 3000# NPT	CLEAN DRAIN
N6	1	2" 3000# NPT	DIRTY DRAIN

VESSEL DESIGN CONDITIONS	
CODE:	ASME SECTION VIII DIV. 1, 2015 EDITION
M.A.W.P.:	150 PSI @ 250°F
M.A.E.P.:	FV PSI @ 250°F
CORROSION ALLOWANCE:	NONE
STAMP:	'U'
PWHT:	N/A
MATERIAL:	SS-316/L

M.D.M.T.:	-20° F @ 150 PSI
HYDROTEST PRESS:	195 PSI
SERVICE:	NON LETHAL
RADIOGRAPHY:	N/A
GASKET:	BUNA



APPROVED WITH MARK-UPS  APPROVED

THIRD ANGLE PROJECTION

TOLERANCES-UNLESS OTHERWISE NOTED

DECIMAL .X = ±.1"  
.XX = ±.02"  
.XXX = ±.005"

FRACTIONAL = ±1/8"

ANGULAR = ± 1°

MAX. MACHINED SURFACE FINISH 125 ✓

**FIL-TREK CORPORATION**

55 Stafford Court  
Cambridge, Ontario  
N1T 1B3  
Canada

Phone: (519) 623-7448  
Fax: (519) 623-8807  
Email: info@fil-trek.com  
Website: www.fil-trek.com

THIS DRAWING IS THE PROPERTY OF 'FIL-TREK CORPORATION' AND MUST NOT BE COPIED OR USED IN ANY WAY DETRIMENTAL TO THE CORPORATION

EQUIPMENT: CARTRIDGE FILTER VESSEL (GLH SERIES)

MODEL NO: S6GLH30-087-4-10F-150

CUSTOMER:

Part. No. 001002-00015

REV. No. 0

DRAWN: VD	DATE: 21/7/2015	SERIAL No.	Part. No. 001002-00015	REV. No. 0
CHK'D:	SCALE: NTS			