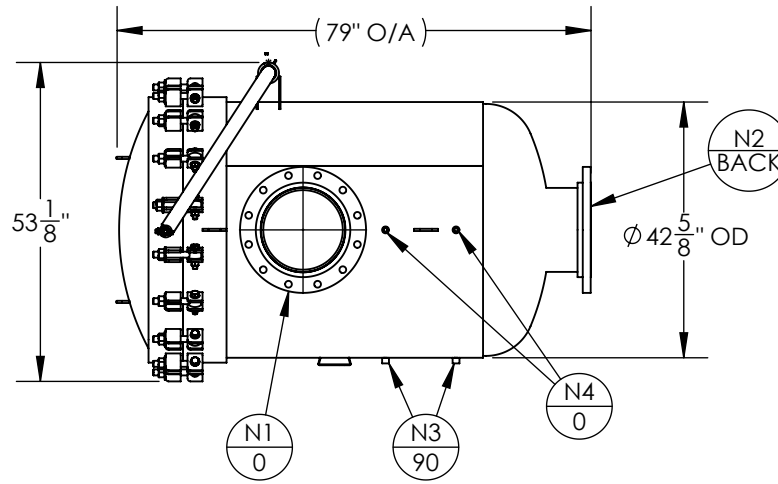


NOTES:

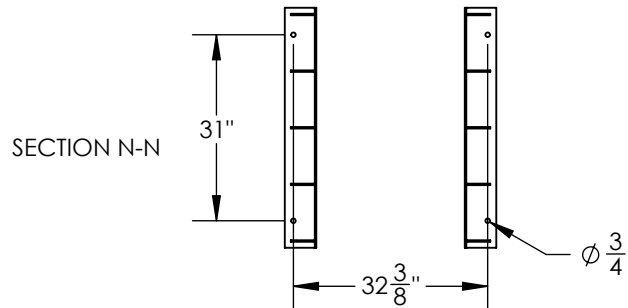
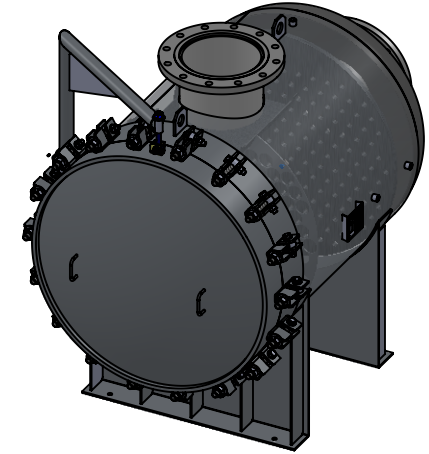
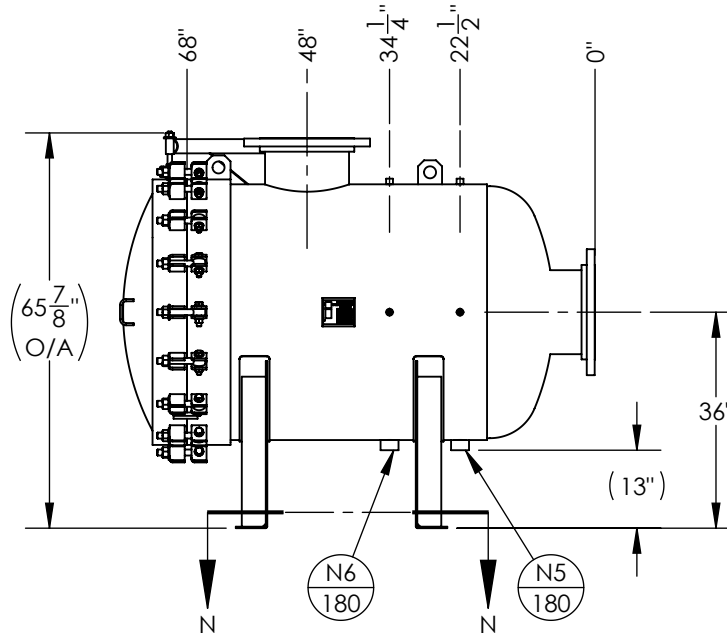
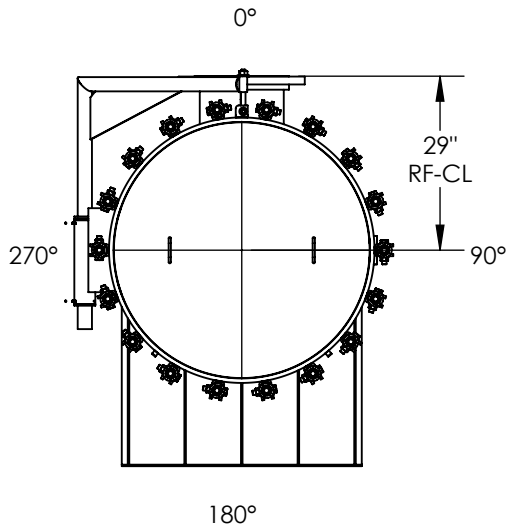
1. DRY WEIGHT: 2286.17 LBS
2. FLOODED WEIGHT: 5145 LBS
3. SHIPPING WEIGHT: 2400 LBS
4. VESSEL VOLUME: 40 FT<sup>3</sup>
5. VESSEL WILL HOUSE (QTY=176) 2-1/2" OD X 40" LG DOE CARTRIDGE FILTERS.



NOZZLE SCHEDULE			
MARK	QTY	SIZE / RATING	DESCRIPTION
N1	1	14" 150# RFSS	INLET
N2	1	14" 150# RFSS	OUTLET
N3	2	1/2" 3000# NPT	PRESSURE GAUGE
N4	2	1/2" 3000# NPT	VENT
N5	1	2" 3000# NPT	CLEAN DRAIN
N6	1	2" 3000# NPT	DIRTY DRAIN

VESSEL DESIGN CONDITIONS	
CODE: ASME SECTION VIII DIV. 1, 2015 EDITION	
M.A.W.P.: 150 PSI @ 250°F	M.D.M.T.: -20° F @ 150 PSI
M.A.E.P.: 15 PSI @ 250°F	
CORROSION ALLOWANCE: NONE	HYDROTEST PRESS: 195 PSI
STAMP: U	SERVICE: NON LETHAL
PWHT: N/A	RADIOGRAPHY: N/A
MATERIAL: SS316	GASKET: BUNA



APPROVED WITH MARK-UPS  APPROVED

<p>THIRD ANGLE PROJECTION</p>	<p><b>FIL-TREK CORPORATION</b></p>	
	<p>55 Stafford Court Cambridge, Ontario N1T 1B3 Canada</p>	<p>Phone: (519) 623-7448 Fax: (519) 623-8807 Email: info@fil-trek.com Website: www.fil-trek.com</p>
<p>THIS DRAWING IS THE PROPERTY OF 'FIL-TREK CORPORATION' AND MUST NOT BE COPIED OR USED IN ANY WAY DETRIMENTAL TO THE CORPORATION</p>		
<p>EQUIPMENT: GLH SERIES (CARTRIDGE FILTER VESSEL)</p>		
<p>MODEL NO: S6GLH42-178-4-14F-150</p>		
<p>CUSTOMER:</p>		
PARENT: NONE	DRAWN: MS	DATE: 6/7/2017
CHK'D:	SCALE: NTS	SERIAL No.
		Part. No. 001002-00017
		REV. No. 0