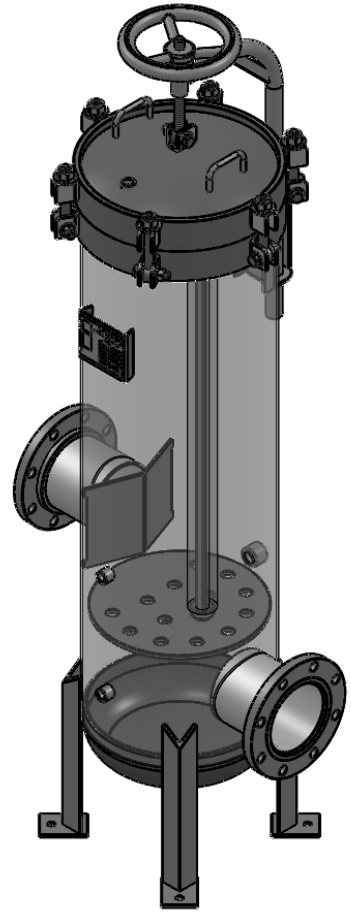


SECTION K-K

| NOZZLE SCHEDULE | | | |
|-----------------|-----|----------------|----------------|
| MARK | QTY | SIZE / RATING | DESCRIPTION |
| N1 | 1 | 6" 150# RFSO | INLET |
| N2 | 1 | 6" 150# RFSO | OUTLET |
| N3 | 2 | 1/2" 3000# NPT | PRESSURE GAUGE |
| N4 | 1 | 1/2" 3000# NPT | VENT |
| N5 | 1 | 1" 3000# NPT | CLEAN DRAIN |
| N6 | 1 | 1" 3000# NPT | DIRTY DRAIN |

| VESSEL DESIGN CONDITIONS | |
|--------------------------|--|
| CODE: | ASME SECTION VIII DIV. 1, 2015 EDITION |
| M.A.W.P.: | 150 PSI @ 400°F M.D.M.T.: -20° F @ 150 PSI |
| M.A.W.P.: | FV PSI @ 400°F |
| CORROSION ALLOWANCE: | NONE HYDROTEST PRESS: 195 PSI |
| STAMP: | U SERVICE: NON LETHAL |
| PWHT: | N/A RADIOGRAPHY: N/A |
| MATERIAL: | SS316 GASKET: BUNA-N |

- NOTES:
1. VESSEL DRY WEIGHT: **371 LBS.**
 2. SHIPPING WEIGHT: **500 LBS.**
 3. FLOODED WEIGHT: **770 LBS.**
 4. VESSEL VOLUME: **6.45 CU. FT.**
 5. VESSEL WILL HOUSE (QTY=25) 2.5"OD x 40" DOE CARTRIDGES.



| | | | |
|---|------------|--|----------------------------------|
| APPROVED WITH MARK-UPS <input type="checkbox"/> | | APPROVED <input type="checkbox"/> | |
| <p>THIRD ANGLE PROJECTION</p> | | <p>FIL-TREK CORPORATION</p> | |
| <p>TOLERANCES-UNLESS OTHERWISE NOTED</p> <p>DECIMAL .X = ±.1" .XX = ±.02" .XXX = ±.005"</p> <p>FRACTIONAL = ±1/8"</p> <p>ANGULAR = ± 1°</p> <p>MAX. MACHINED SURFACE FINISH 125/√</p> | | <p>55 Stafford Court Cambridge, Ontario N1T 1B3 Canada</p> <p>Phone: (519) 623-7448 Fax: (519) 623-8807 Email: info@fil-trek.com Website: www.fil-trek.com</p> | |
| <p>THIS DRAWING IS THE PROPERTY OF 'FIL-TREK CORPORATION' AND MUST NOT BE COPIED OR USED IN ANY WAY DETRIMENTAL TO THE CORPORATION</p> | | | |
| EQUIPMENT: | | GL SERIES (CARTRIDGE FILTER VESSEL) | |
| MODEL NO: | | S6GL16-025-4-6F-150 | |
| CUSTOMER: | | | |
| PARENT: NEW | DRAWN: JN | DATE: 13/06/2017 | SERIAL No. Part No. 001001-00338 |
| CHK'D: | SCALE: NTS | | REV. No. 0 |