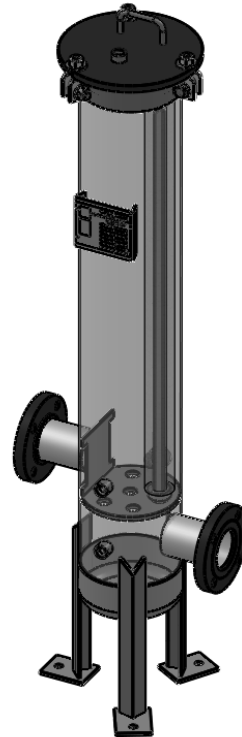
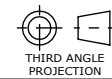


NOZZLE SCHEDULE			
MARK	QTY	SIZE / RATING	DESCRIPTION
N1	1	3" 150# RFSO	INLET
N2	1	3" 150# RFSO	OUTLET
N3	2	1/2" 3000# NPT	PRESSURE GAUGE
N4	1	1/2" 3000# NPT	VENT
N5	1	1" 3000# NPT	CLEAN DRAIN
N6	1	1" 3000# NPT	DIRTY DRAIN
VESSEL DESIGN CONDITIONS			
CODE: ASME SECTION VIII DIV. 1, 2015 EDITION			
M.A.W.P.: 150 PSI @ 250°F		M.D.M.T.: -20° F @ 150 PSI	
M.A.E.P.: 15 PSI @ 250°F			
CORROSION ALLOWANCE: NONE		HYDROTEST PRESS: 195 PSI	
STAMP: UM		SERVICE: -	
PWHT: N/A		RADIOGRAPHY: NONE	
MATERIAL: 2507		GASKET: BUNA	

- NOTES:
1. VESSEL WILL HOUSE (QTY=6) 2.5" OD x 40" LG CARTRIDGES.
 2. DRY WEIGHT: 130.79 LBS
 3. FLOODED WEIGHT: 235 LBS
 4. SHIPPING WEIGHT: 200 LBS
 5. VESSEL VOLUME: 1.60 FT³



APPROVED WITH MARK-UPS APPROVED



THIRD ANGLE PROJECTION
 TOLERANCES-UNLESS OTHERWISE NOTED
 DECIMAL .X = ±.1"
 .XX = ±.02"
 .XXX = ±.005"
 FRACTIONAL = ±1/8"
 ANGULAR = ± 1°
 MAX. MACHINED SURFACE FINISH 125/√



FIL-TREK CORPORATION

55 Stafford Court
 Cambridge, Ontario
 N1T 1B3
 Canada

Phone: (519) 623-7448
 Fax: (519) 623-8807
 Email: info@fil-trek.com
 Website: www.fil-trek.com

THIS DRAWING IS THE PROPERTY OF 'FIL-TREK CORPORATION' AND MUST NOT BE COPIED OR USED IN ANY WAY DETRIMENTAL TO THE CORPORATION

EQUIPMENT: GL SERIES (CARTRIDGE FILTER VESSEL)

MODEL NO: 2507GL08-006-4-3F-150

CUSTOMER:

PARENT:	DRAWN: JN	DATE: 30/05/2017	SERIAL No.	Part No. 001001-00350	REV. No.
CHK'D:	SCALE: NTS				