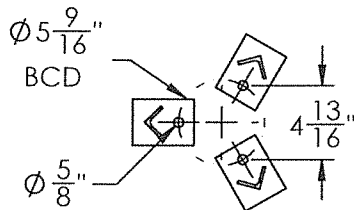
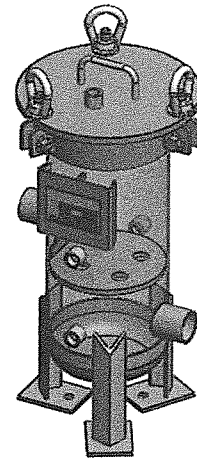
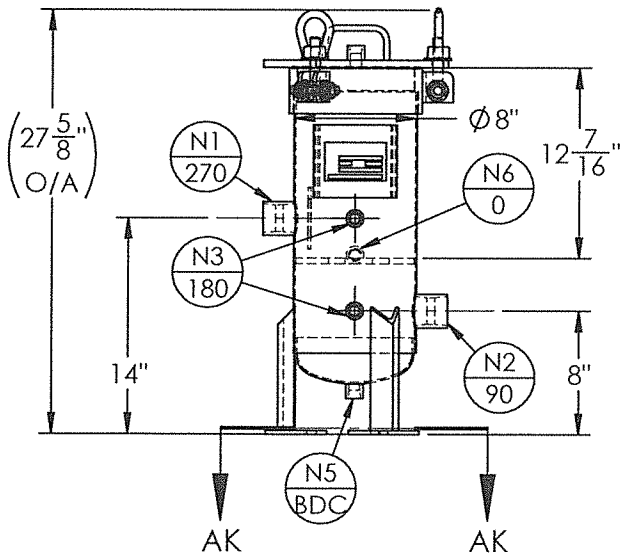


NOZZLE SCHEDULE			
MARK	QTY	SIZE / RATING	DESCRIPTION
N1	1	1 1/2" 150# NPT	INLET
N2	1	1 1/2" 150# NPT	OUTLET
N3	2	1/2" 3000# NPT	PRESSURE GAUGE
N4	1	1/2" 3000# NPT	VENT
N5	1	1/2" 3000# NPT	CLEAN DRAIN
N6	1	1/2" 3000# NPT	DIRTY DRAIN

VESSEL DESIGN CONDITIONS			
CODE: BEST COMMERCIAL PRACTICE			
M.A.W.P.:	150 PSI @ 250°F	M.D.M.T.:	-20° F @ 150 PSI
M.A.E.P.:	15 PSI @ 250°F		
CORROSION ALLOWANCE:	NONE	HYDROTEST PRESS:	150 PSI
STAMP:	NC	SERVICE:	NON LETHAL
PWHT:	N/A	RADIOGRAPHY:	N/A
MATERIAL:	CS	GASKET:	BUNA-N

- NOTES:
- VESSEL WILL HOUSE (QTY=4) 2.75"OD x 10" LG CARTRIDGES.
 - DRY WEIGHT: 61.75 LBS
 - FLOODED WEIGHT: 126 LBS
 - SHIPPING WEIGHT: 100 LBS
 - VESSEL VOLUME: .8 C.F.



SECTION AK-AK
SCALE 1 : 12

**CERTIFIED BY
FIL-TREK CORPORATION**

Name: *W* Date: *04/22/15*

 THIRD ANGLE PROJECTION TOLERANCES-UNLESS OTHERWISE NOTED DECIMAL .X = ±.1" .XX = ±.02" .XXX = ±.005" FRACTIONAL = ±1/8" ANGULAR = ± 1° MAX. MACHINED SURFACE FINISH 125 ✓	 FIL-TREK CORPORATION 55 Stafford Court Cambridge, Ontario N1T 1B3 Canada Phone: (519) 623-7448 Fax: (519) 623-8807 Email: info@fil-trek.com Website: www.fil-trek.com	
	THIS DRAWING IS THE PROPERTY OF "FIL-TREK CORPORATION" AND MUST NOT BE COPIED OR USED IN ANY WAY DETRIMENTAL TO THE CORPORATION.	
EQUIPMENT:	CARTRIDGE FILTER HOUSING	
MODEL NO:	EGL08-004-1-1.5P-SW-150	
CUSTOMER:	STOCK	
PARENT:	DRAWN: NV CHK'D:	DATE: 4/22/2015 SCALE: NTS
	SERIAL No. 18507	Part No. 001022-00018 DWG. No. 001022-00018-1
		REV. No. 0