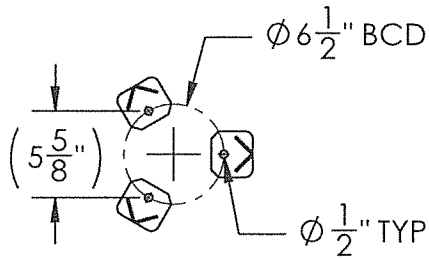
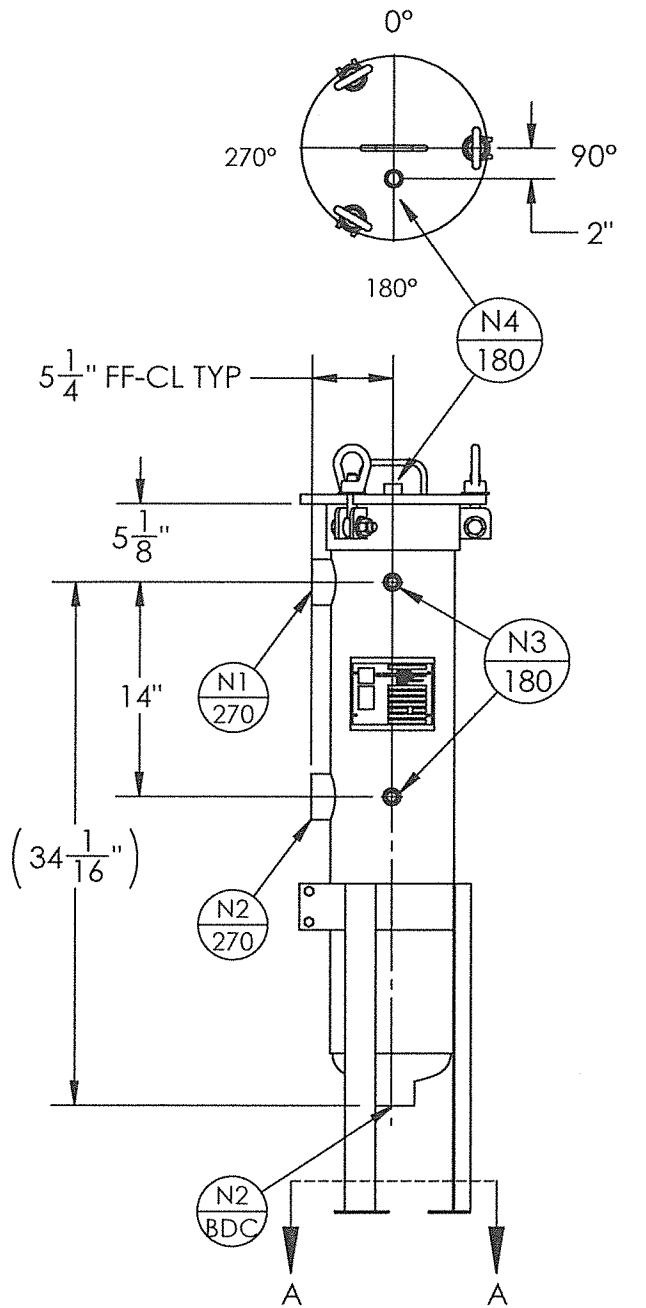
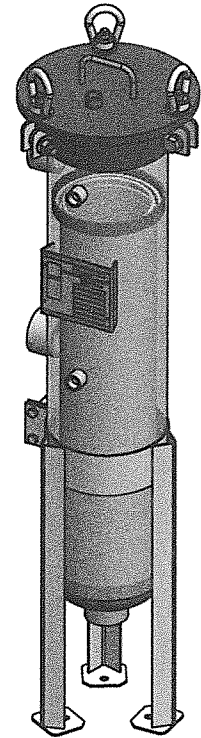


NOZZLE SCHEDULE			
MARK	QTY	SIZE / RATING	DESCRIPTION
N1	1	2" 3000# NPT	INLET
N2	1	2" 3000# NPT	OUTLET
N3	2	1/2" 3000# NPT	PRESSURE GAUGE
N4	1	1/2" 3000# NPT	VENT
N5	1	-	CLEAN DRAIN
N6	1	-	DIRTY DRAIN

VESSEL DESIGN CONDITIONS	
CODE:	ASME SECTION VIII DIV. 1, 2015 ED
M.A.W.P.:	150 PSI @ 250°F
M.D.M.T.:	-20° F @ 150 PSI
M.A.E.P.:	15 PSI @ 250°F
CORROSION ALLOWANCE:	N/A
HYDROTEST PRESS:	195 PSI
STAMP:	UM
SERVICE:	NON LETHAL
PWHT:	N/A
RADIOGRAPHY:	N/A
MATERIAL:	SS316
GASKET:	BUNA-N

- NOTES:
1. VESSEL WILL HOUSE (QTY=1) DOUBLE LENGTH BASKET.
  2. DRY WEIGHT: 87 LBS
  3. FLOODED WEIGHT: 149 LBS
  4. SHIPPING WEIGHT: 100 LBS
  5. VESSEL VOLUME: 1 CU.FT. FT<sup>3</sup>



SECTION A-A  
SCALE 1 : 12

**CERTIFIED BY**  
**FIL-TREK CORPORATION**  
JAN 26 2016  
Name: K.S. Date: \_\_\_\_\_

<p>THIRD ANGLE PROJECTION</p> <p>TOLERANCES-UNLESS OTHERWISE NOTED</p> <p>DECIMAL .X = ±.1" .XX = ±.02" .XXX = ±.005"</p> <p>FRACTIONAL = ±1/16"</p> <p>ANGULAR = ±.1°</p> <p>MAX. MACHINED SURFACE FINISH 125 ✓</p>			<b>FIL-TREK CORPORATION</b> 55 Stafford Court Cambridge, Ontario N1T 1B3 Canada Phone: (519) 623-7448 Fax: (519) 623-8807 Email: info@fil-trek.com Website: www.fil-trek.com	
	<small>THIS DRAWING IS THE PROPERTY OF 'FIL-TREK CORPORATION' AND MUST NOT BE COPIED OR USED IN ANY WAY DETRIMENTAL TO THE CORPORATION</small>			
EQUIPMENT:		BAG FILTER HOUSING (SL SERIES)		
MODEL NO:		S6SL112-2P-SW-CD-150		
CUSTOMER:		STOCK		
PARENT:	DRAWN: TS	DATE: 6/23/2015	SERIAL No. Part No. 002002-18548	
CHK'D:	SCALE: NTS	1/28/14	DWG. No. 002002-18548-1	
			REV. No. 0	