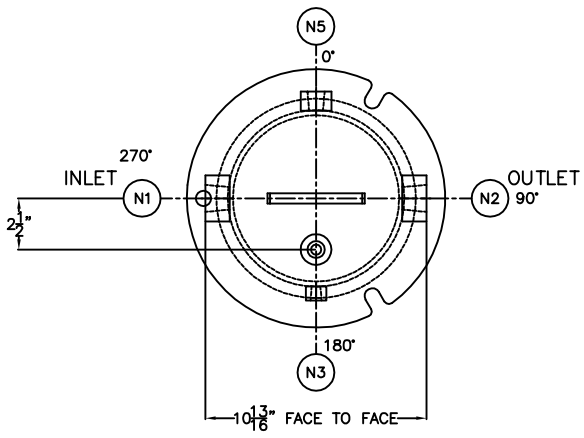
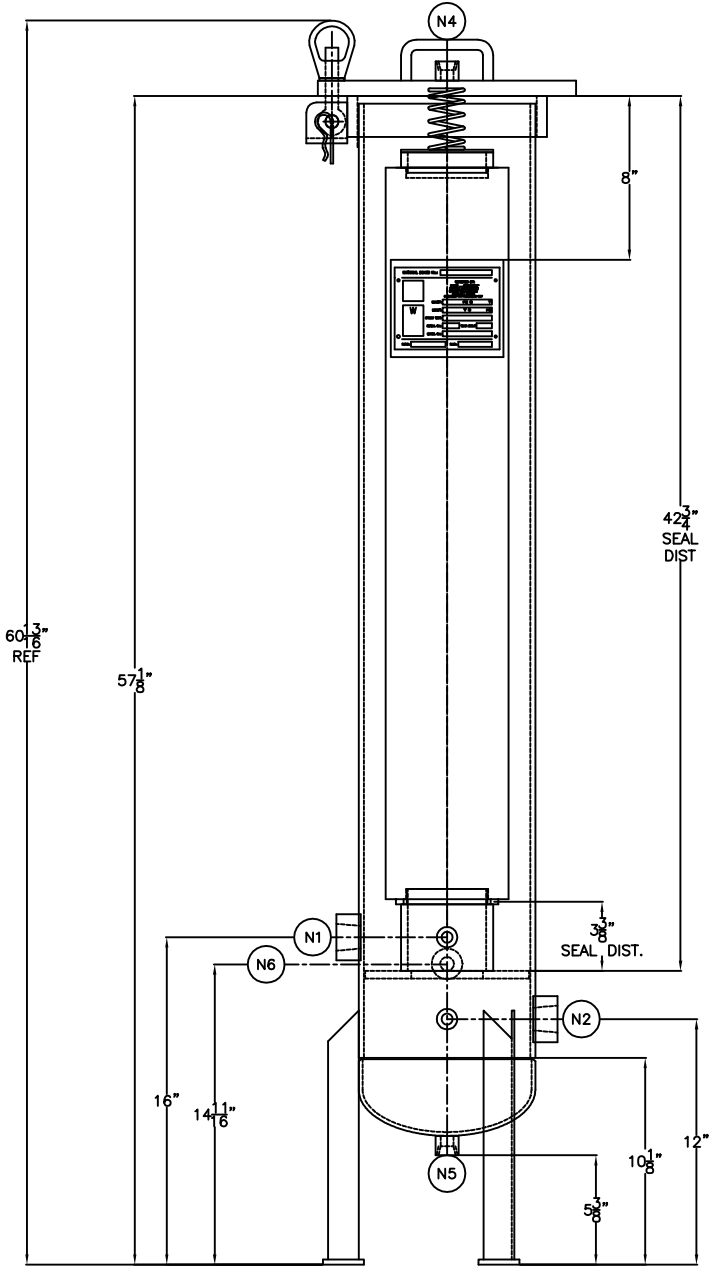


ITEM	QTY	PART No.	DESCRIPTION
------	-----	----------	-------------

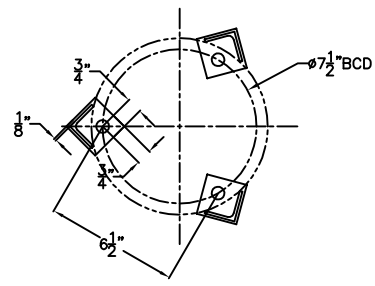


NOZZLE SCHEDULE			
MARK	QTY	SIZE	DESCRIPTION
N1	1	1" NPT 6000#	INLET
N2	1	1" NPT 6000#	OUTLET
N3	2	1/4" NPT6000#	DIFF. PRESS. GAUGE
N4	1	1/2" NPT6000#	VENT
N5	1	1/2" NPT6000#	DRAIN
N6	1	1/2" NPT6000#	DRAIN



DESIGN NOTES:

MAX. ALLOW. WORKING PRESS: 150 PSIG @ 250° F.
 MINIMUM DESIGN METAL TEMP.: -20° F @ 150 PSIG.
 CORROSION ALLOWANCE: 1/8"
 HYDROSTATIC TEST : 195 PSIG.
 ASME CODE STAMP REQUIRED: UM STAMP
 C.R.N. (CANADIAN REGISTRATION NUMBER): ALBERTA (PENDING)
 N.D.E.: NONE.
 P.W.H.T.: NONE.
 VESSEL SERVICE: SWEET SERVICE
 MATERIAL FOR CONSTRUCTION: CARBON STEEL
 VESSEL TO BE BEAD BLASTED & PAINTED FIL-TREK BLUE
 VESSEL QUANTITY: 2



MODEL NUMBER: CC08-01-36-1P-150

TOLERANCES—UNLESS OTHERWISE NOTED	
DECIMAL	.X = ±.1" .XX = ±.02" .XXX = ±.005"
FRACTIONAL	≤24" = ±1/16" >24" = ±1/8"
ANGULAR	= ±.5°
MAX.MACHINED SURFACE ROUGHNESS 125 √ MICROINCHES	



FIL-TREK CORPORATION
 CAMBRIDGE ONTARIO - CANADA

THIS DRAWING IS THE PROPERTY OF 'FIL-TREK CORPORATION' AND MUST NOT BE COPIED OR USED IN ANY WAY DETRIMENTAL TO THE CORPORATION

DRAWN: PT	DATE: 10/05	JOB No. V-2803	DWG. No. R000418
-----------	-------------	----------------	------------------